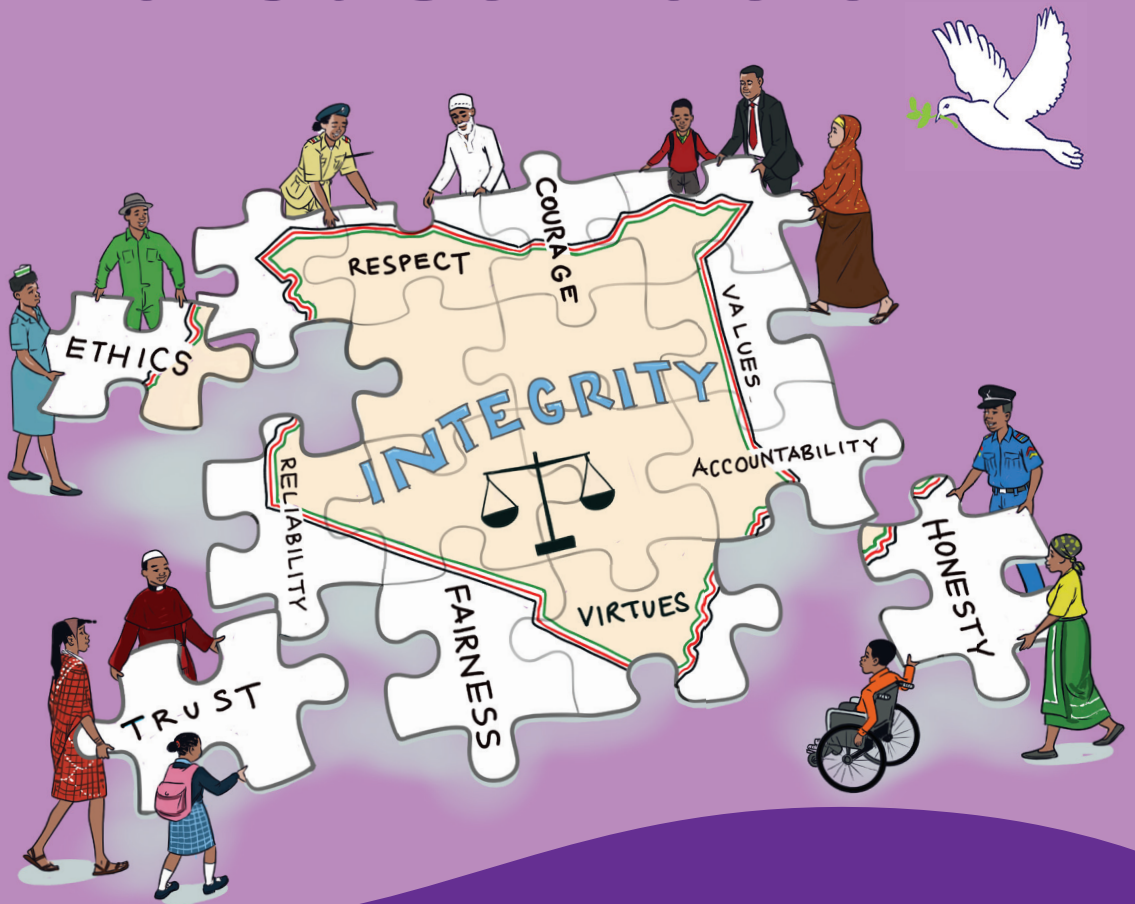


Integrity for a Just Nation



"Let us be careful to do right not only in the sight of the Lord but also in the sight of people."
2 Corinthians 8:21

**LENTEN CAMPAIGN 2024
BOOKLET**





© KCCB-CPIHD-Catholic Justice and Peace Department, 2024

Conceptualisation and Development:

**Kenya Conference of Catholic Bishops-General Secretariat
Catholic Justice and Peace Department**

Editorial team: **Eusebius Atamallo, Festus Rotich and Wainainah Kiganya**

Illustrations: **Robert Kambo**

Design and Layout: **Kelvin Malombe**

Contributions Coordinator: **Constance Ikhabi Mutende**

Printing: **Don Bosco Printing Press, P. O. Box 158 Makuyu 01020, Kenya**

**INTEGRITY FOR
A JUST NATION**
LENTEN CAMPAIGN 2024

TABLE OF CONTENTS

5	PREFACE: INTEGRITY FOR A JUST NATION
8	INTRODUCTION: LENT IN THE CATHOLIC CHURCH
9	PREAMBLE: STATIONS OF THE CROSS
13	WEEK ONE: SOVEREIGNTY OF THE PEOPLE
13	SEE: STORY
13	JUDGE: SITUATION ANALYSIS
14	SPIRITUAL REFLECTION
15	ACT: REFLECTION QUESTIONS
15	EXAMINATION OF CONSCIENCE
15	PROPOSED ACTIONS
17	WEEK TWO: RIGHT TO CLEAN SAFE AND ADEQUATE WATER
17	SEE: STORY
17	JUDGE: SITUATION ANALYSIS
19	SPIRITUAL REFLECTION
20	ACT: REFLECTION QUESTIONS
20	EXAMINATION OF CONSCIENCE
20	PROPOSED ACTIONS
22	WEEK THREE: CHALLENGES OF HIGH COST OF LIVING
22	SEE: STORY
22	JUDGE: SITUATION ANALYSIS
23	SPIRITUAL REFLECTION
25	ACT
25	EXAMINATION OF CONSCIENCE
25	PROPOSED ACTIONS
27	WEEK FOUR: RELIGIOUS EXTREMISM
27	SEE: STORY
28	JUDGE: SITUATION ANALYSIS
29	SPIRITUAL REFLECTION
30	ACT
30	EXAMINATION OF CONSCIENCE
30	PROPOSED ACTIONS
32	WEEK FIVE: EMERGING THREATS TO THE FAMILY
32	SEE: STORY
32	JUDGE: SITUATION ANALYSIS
33	SPIRITUAL REFLECTION
35	ACT
35	EXAMINATION OF CONSCIENCE
35	PROPOSED ACTIONS
77	PRAYER FOR THE CANONISATION OF CARDINAL OTUNGA
78	PRAYER FOR THE ANTI-CORRUPTION CAMPAIGN

PREFACE

INTEGRITY FOR A JUST NATION

Lent is a time when we pause to reflect, pray, fast, repent and be charitable. Our merciful God is always present to show us his everlasting love through reconciliation with self, with others and with creation. As the Catholic Church, this is a special time which also reminds us that we are mortal beings.

This Lenten season occurs at a historical moment when the Universal Church is focused on strengthening itself as a Synodal Church. The spirit of Synodality is one in which we journey together as one community, actively participating in the life and mission of our call to be witnesses of the risen Christ. The Synodality journey is one in which we are privileged to be missionaries who bring the Good News of the Lord to the end of the earth (Acts 1:8). We are, therefore, invited to continue praying for this process of Synodality to be a moment of conversion towards making our Church Christ-centered in what we do and in whom we are as children of God.

The Lenten reflections this year touch the core of our Christian faith: care for the poor. The Church in her teaching, practice and prayers places the poor at the heart of her mission. This year's theme, **Integrity for a Just Nation**, focuses on using our integrity to build a culture of justice in Kenya. A just nation is only possible if the citizens are people of integrity. The invitation, therefore, is to reflect on our journey of faith as the baptised people of God who should live with integrity to build a just nation.

This Lenten season places responsibility at our doorstep: conducting ourselves with integrity. As moral beings, we have to go forth and fight for justice for the poor. There are many causes which as Christians we are called to fight for. However, Mother Church says there is only one choice to make over the poor; the preferential option for the poor. Who are the poor we must attend to? In the Old Testament, widows and orphans are often mentioned as vulnerable members of society. In the Sermon on the Mount, Jesus pronounces: "Blessed are the poor in spirit, for theirs is the kingdom of heaven." He illustrates the consequences of neglecting the poor in the parable about a rich man and a poor beggar named Lazarus. Numerous passages in the prophetic books condemn the oppression of the poor and call for justice. In the parable of the Good Samaritan, Jesus emphasises love and care for our neighbours, mainly those in need.

What do the Scriptures teach us about integrity?

Psalm 25:21 is a prayer for divine protection based on the virtues of integrity and uprightness. The psalmist seeks to safeguard not through worldly power but through personal attributes according to God's values. Integrity is a cornerstone of church teaching, which signifies a genuine concern for others.

Isaiah 1:17 calls us not only to passively acknowledge justice but to actively seek it and defend the oppressed. Micah 6:8 emphasises that our integrity is not a solitary pursuit but must be coupled with a commitment to justice and a compassionate, humble approach to our relationship with God and others.

Pope Francis, leading as an example in his humility and simplicity, emphasises serving the poor and marginalised, aligning his actions with the principles of justice and integrity. Mother Teresa embodied humility through a life dedicated to serving the poorest of the poor, showcasing the impact of a life lived with integrity and justice.

The seven dimensions of integrity that I find key in our everyday lives are honesty and truthfulness; transparency; adherence to moral principles; accountability; humility; courage; and ethical decision-making and commitment to doing what is right.

Integrity and the Catholic Social Teaching

As clearly stated in our Catholic Social Teaching, the preferential option for the poor means that we cannot see injustice towards the poor, leave them in their unbearable condition and find reasons to justify our inaction. Our spiritual poverty should enkindle the inner fire to alleviate the suffering and misery of the poor. We are called to be agents of ensuring a just nation. There are four dimensions of justice that align with the theme of **Integrity for a Just Nation**.

Social justice emphasises the fair distribution of resources, opportunities and privileges in society. It calls on all of us to address inequalities and promote the common good. **Week One** focuses on the **Sovereignty of the people** as articulated in the Constitution. Improved government service delivery is a right of Kenyans.

Social justice is also emphasised in **Week Five**. If conditions favourable to human living are lacking, many families will not cope with emerging threats to the very concept of family as God ordained it. Developments in technology and what Pope Francis calls the "dictatorship of relativism" are real threats to the family.

Week Two focuses on the **Right to clean safe and adequate water**. With a proper understanding of environmental justice, which extends the principles of justice to the relationship between humans and the environment, we see our role in protecting the environment.

Distributive justice involves the fair allocation of resources, benefits and burdens in a society. The Kenya Conference of Catholic Bishops has dwelt on this issue in its past pastoral letters and press statements. As we see in **Week Three**, the **high cost of living** coupled with high taxes must be justified. Additionally, the Government must be accountable and transparent in how it uses taxpayers' money.

The right to worship is a justice issue. However, as we reflect in **Week Four**, the horrendous acts of sects that use the name of religion to commit religious extremist atrocities as we witnessed in Shakahola and other places are not acceptable.

In the Synodality process to date, Christians are called to support and prioritise the needs of the poor. The spirit of Synodality invites us to be in communion with one another and actively participate in the life of the Church. This begins from the family embracing the mission of our Lord Jesus Christ. May we find time to introspect, amend our ways, carry out acts of charity and, beyond these, carry out our prophetic role to support the poor by reforming the social structures that create inequalities.

May the graces of this Lenten season make us better instruments of God's call to go forth and be witnesses of social justice in our neighbourhood, in our counties and in the country. At the end of the 40 days of prayer, repentance and renewal, may we enter the paschal mystery with magnanimity and rise with the Risen Christ in Easter.



Rt Rev John Oballa Owaa

Chairman, KCCB-CPIHD

Catholic Justice and Peace Department

Bishop of Ngong

INTRODUCTION

LENT IN THE CATHOLIC CHURCH

In the Christian tradition, this is the period in the liturgical calendar from Ash Wednesday to Palm Sunday (Sundown). This annual commemoration prepares the faithful through prayer, repentance, giving alms and self-denial. The event is linked to the Passion of Christ and the celebration of his Resurrection. It is also in this liturgical period that catechumens are baptised on Easter.

Why 40 Days?

The number 40 is important in the life of Christians. Moses and the Israelites, for example, wandered in the desert for 40 years as they prepared to go to the Promised Land. Moses was on Mount Sinai for 40 days and 40 nights without eating or drinking water, where he had gone to receive the tablets of the Covenant God made with the Israelites. In the time of Noah, it rained for 40 days and 40 nights. Elijah spent 40 days and 40 nights on Mount Horeb without food. In the New Testament, Jesus was led to the wilderness where he fasted for 40 days and 40 nights.

Why the Kenya Lenten Campaign?

In the spiritual mood of Lent, the Catholic Church in Kenya felt the need to inform the public of the problems affecting society and advocate for change. Through the Lenten Campaign, the Kenya Conference of Catholic Bishops call for all Christians and people of goodwill to join them in addressing these problems and advocate for change. By joining the bishops in advocacy, individual efforts, our small voices become much louder and each individual's action is multiplied.

PREAMBLE

STATIONS OF THE CROSS

STATION 1: Jesus is condemned to death

As we view the scene, we look at Jesus; His face, the crown of thorns, the blood and hands tied behind His back. His clothes are stuck to the wounds. Herod washes his hands off the whole unjust affair. We too act in the same manner. We tie others with our views and subject them to indignity using power that is meant to empower and not subject people to slavery. We pray that those in authority may enable us to be free from things that tie our hands over decisions meant to improve our lives.

STATION 2: Jesus carries His Cross

We contemplate on the weight of the cross and how uncomfortable it is on His shoulders, having been unfairly judged. How often do we place heavy loads on our dear ones with actions which cause discomfort such as pollution, exploitation of natural resources, littering and destruction of sources of clean and safe drinking water? Let us pray that we may be good stewards of the resources entrusted to us by God for the common good.

STATION 3: Jesus falls for the first time

We stare at weakness in his eyes, his whole body exhausted and on the ground, being roughed up by soldiers as they pull up. We too, find ourselves in similar life circumstances. There are forces that pull us down to our knees such as the high cost of living challenges that demotivate us and make life unbearable to a point of losing hope. Jesus gives us the strength to look at our situation with hope. Let us pray that those who have may help the poor and those in authority move to check the cost of living weighing heavily on the poor.

STATION 4: Jesus meets His Mother

As we watch them, we contemplate the mystery of love's power to give strength and overcome life's tragedies, violence, hatred, disunity and hopelessness. How often do we show love to others at their lowest moments, when rejected, misunderstood, misjudged and labelled as evil; or those from families with members practicing extremism to the detriment of others? We pray that we shun discrimination based on religion; that having been created in the image and likeness of God, we should desist from vices such as human trafficking, organ harvesting, cultism and extremism. We pray that we all see and love each other through embracing and guarding the sanctity of life.

STATION 5: Simon of Cyrene helps Jesus to carry His Cross

We look at His sorrowful gaze, pleading for help, as we contemplate his struggle. It's important we see how he looks at Simon with utmost

humility and gratitude. Jesus reminds us that there is a time when we need the unquestioning help of others. We are being challenged to get into the lives of those struggling to make ends meet, the ones whose families are facing threats of breaking up, and the dehumanised. We are called to uphold solidarity and appreciate the power in unity for the good of all with no families, drug addicts or those engaging in prostitution and other social evils that afflict families.

STATION 6: Veronica wipes the face of Jesus

As we look at the face of Jesus, what do we see? What does it hold for us? What do we see as we look deeply into the agony and pain of others? Can we embrace those in similar problems? With their faces all covered with their impetuous passion?

STATION 7: Jesus falls for the second time

We look thoughtfully at Jesus on the ground, with all the agony taking its toll on him. We let our heart go out to him knowing that we will never feel alone in our suffering. Let us ask him for forgiveness for not relying on him. Lord, give us courage to lift our spirit once we fall into anxiety, depression, burnout, mental imbalances and illnesses that wear us out. May we look upon you as a source of inspiration to become what you meant us to be.

STATION 8: Jesus meets the woman of Jerusalem

We look at their faces, so full of love and gratitude, loss and fear. We wonder what words might have passed between them. His tender, compassionate and merciful love for us places us with the women and children in his support. Lord, the women of Jerusalem remind us that those who suffer have dignity and are your children. We pray that we may restore the value of the human personality above idols of production, technology, the state, race, nationality and all other actions that disfigure our world.

STATION 9: Jesus falls for the third time

We pause to contemplate him on the ground; the brokenness that makes us whole, the surrender that gives us life. We pause to experience and receive His complete love for us. He is indeed completely poured out for us.

Lord, you challenge us to follow your directions of compassion, kindness and love. More often we move away from these. We ask you to be our way so that we may keep our vision fixed on you as the source of our strength in our problems and sufferings.

STATION 10: Jesus' clothes are taken away

We pause to watch Him stripped down and how he faces his death with such nakedness. We reflect on how much of himself he has revealed to us, holding nothing back. Lord, you invite us to lay out ourselves before you to acquire our original innocence. We have clothed ourselves with pride, disobedience, exploitation and evils that have made the life of others

unbearable. Create for us a society that pleases you and is fast in service, solidarity and worship.

STATION 11: Jesus is nailed to the Cross

We make ourselves watch the nails being driven through his flesh. As we watch his face, can there be any pain or agony he would not understand? Lord, we too nail our brothers and sisters. We fail to forgive them, help or share with them to create a community of love. Our hearts are full of hatred and a spirit of revenge. Help us to cast them all out through forgiveness, for it is in forgiving that we are forgiven.

STATION 12: Jesus dies on the Cross

We stand there at the foot of the Cross and behold our salvation. There, we experience the giver of life transit from life to death. Lord, we experience little deaths through hurts, broken families, conflicts and misunderstandings. In every one of us, there is a wound inflicted by failure, humiliations and bad conscience. Through your death, let us be transfigured by you to change them into a focus of energy, source of creativity where communion, friendship and understanding burst forth.

STATION 13: Jesus is taken down from the Cross.

We behold this scene at the foot of the Cross. We deeply think of touching and caressing his body. We remember all that his hands have touched, all who have been blessed by his warm embrace and pause to let it soak in. He knows the mystery of death. He has fallen into good hands. You have been wounded to death. Lord, we echo the words of your servant Job, that I know my redeemer lives, and that at the last we will stand upon the earth then in my flesh I shall see God ... (Job 19:25-27). Forgive us for so often we live only for ourselves; our lives revolve around our little work of what we want and what we fear. Grow in us a spiritually attentive, larger and more generous heart. Help us to redirect ourselves and our concerns outwardly towards your spirit, who dwells on the people around us.

STATION 14: Jesus is laid in the tomb

We stand for a moment outside His tomb. This final journey of His life has shown us the meaning of his gift of himself to us. This tomb represents every tomb we stand before with fear, in defeat, struggling to believe it could even be empty. Lord, you taught that eternal life is to know God and Jesus whom He has sent. A life of commitment, trust and love. Especially our commitment to the human life of all, particularly the most deprived in our final dying. Let us seek to communicate this sense of eternal life, this love and trust, which helps us to overcome the fears of those about them. Let our dying moment be an act of trust in God to overcome the fears of death.

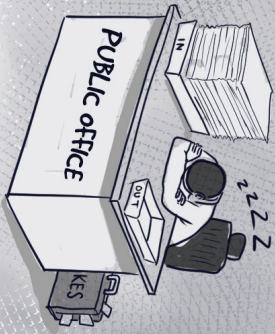
L: We adore you Christ, and bless you.

All: Because by your Holy Cross you have redeemed the world.

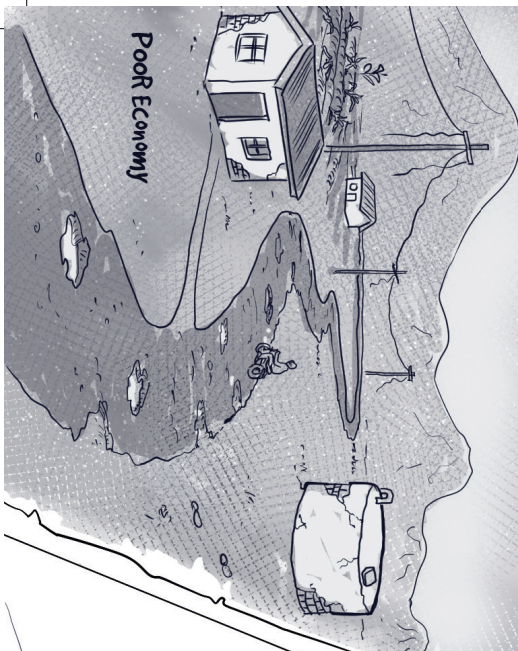
ENDELEVU PEOPLE'S DAY

AGENDA

- Budget Planning
- Audit Report



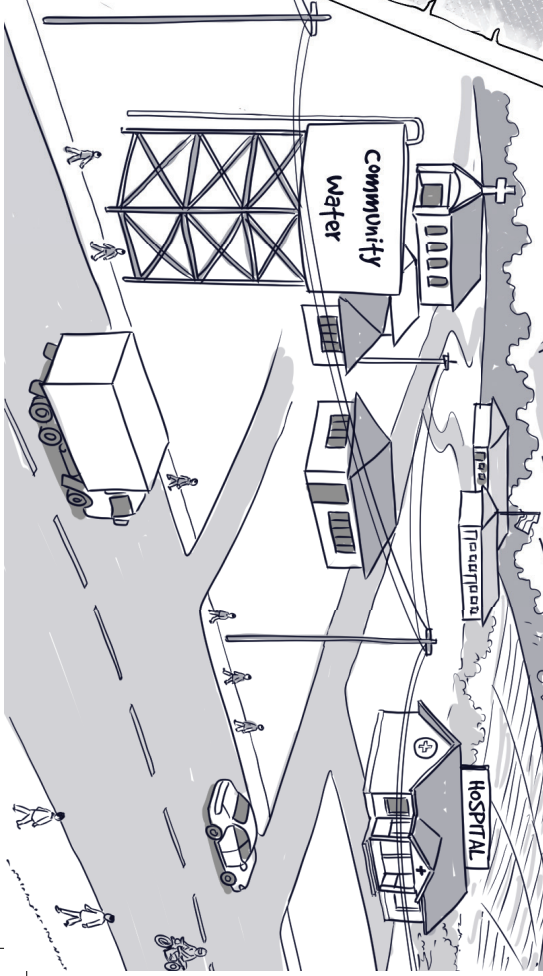
Poor Economy



ENDELEVU TOWN HALL



PUBLIC OVERSIGHT COMMITTEE



WEEK ONE

SOVEREIGNTY OF THE PEOPLE

SEE: STORY

Endelevu town enjoyed progressive economic growth while under a people-centred leadership. Government agencies always conducted civic engagement, which enhanced people's participation and service delivery.

Over time, Endelevu town's economy started experiencing a decline after an insensitive leadership came into power. Non-adherence to the rule of law, poor public participation and lack of inclusivity in government operations became the new order. Apathy among citizens led them to shun the public budgetary planning process; there was a deep-rooted feeling that nothing would change.

To reverse the state of neglect and poor governance, religious and other opinion leaders, youth and elders organised civic awareness outreach fora to promote citizen-led accountability for transformative governance. The result was increased public awareness of people's sovereignty. The people formed public committees to monitor and oversee, among others, Endelevu town's economic recovery strategy. They conducted social audits on government procurement processes, quality control and value for money assessments on public investments. Project management committees were established to ensure proper implementation of government-funded programmes. Continuous civic education was provided to increase public participation. People became more aware of their civic rights and responsibilities. There was renewed public engagement, improved service delivery, accountability and transparency, and consequently, an enhanced standard of living.

JUDGE: SITUATION ANALYSIS

When Kenya attained independence in 1963, it was felt that it had a good constitution with separation of powers and a regional (*majimbo*) governance structure. Between 1964 and 1991, the Independence Constitution was amended at least 26 times, with most changes aimed at strengthening the executive power, emasculating the Judiciary and Parliament, stripping power from institutions that promoted democracy, human rights and freedoms. The Kenyan

people rose up against the oppressive and dictatorial system and demanded a new dispensation .

Sovereignty of the people is generally understood as the principle that the authority of the Government is created and sustained by its people's consent, through their elected representatives (rule by the people). The people are the source of all political power as set out in Article 1 of the Constitution. The people may exercise their sovereign power either directly or through their democratically elected representatives. However, between 2013 and 2022, the political class has slowly clawed back some constitutional freedoms. Delays in releasing funds to the counties have starved devolved units of meaningful development. There has been massive corruption; skewed and tribal appointments; state capture of independent institutions; voter bribery; and excessive taxation.

The leadership of Kenya is called upon "to protect the sovereignty of the people". National resources are held in trust for all the citizens. Kenya's Bill of Rights protects and promotes political, civil, economic, social and cultural rights. Implementing these rights fulfills the promise of our democracy and ensures equitable distribution of national resources. Kenyans have power to recall MPs and MCA, and to impeach the President. They should remain vigilant to ensure their sovereign power is respected.

According to Catholic Social Teaching, all people have a right to participate in the economic, political and cultural life of the society. In their State of the Nation address of May 27, 2022, the Catholic Bishops in Kenya pointed out the need to cultivate a culture of using elections as a moment to provide the nation with visionary leaders to render services and guide the people towards peaceful co-existence. They observed that public office should not be an opportunity to enrich their holders or trample on the people's rights.

SPIRITUAL REFLECTION

Genesis 9:8-15

1 Peter 3:18-22

Mark 1:12-15

God makes a covenant with humanity to never again destroy the world. Everything else has to be for the good of God's creatures and never for their destruction. This includes political power, which

must be exercised in service of the common good. It is up to humans to choose their leaders in accordance with moral principles and divine laws. Having been rescued from the evil world through the waters of baptism, in the new covenant we pledge to live in keeping with God's will by recognising His sovereignty while exercising our rights and responsibilities in an accountable and enlightened way.

In the Gospel, after defeating Satan's attempts to frustrate God's work, Jesus announces the time of fulfilment of God's promises. The 40 days in the wilderness represent the time of testing. Our society finds itself in a time of testing. In our daily choices and actions, we know that in Christ we shall eventually emerge victorious.

Jesus calls people to repent and believe in the good news. He makes present the Kingdom of God, which we all need to ensure the sovereignty of the people serves the dignity of every person and the common good of society as a whole as we begin this season of Lent.

ACT: REFLECTION QUESTIONS

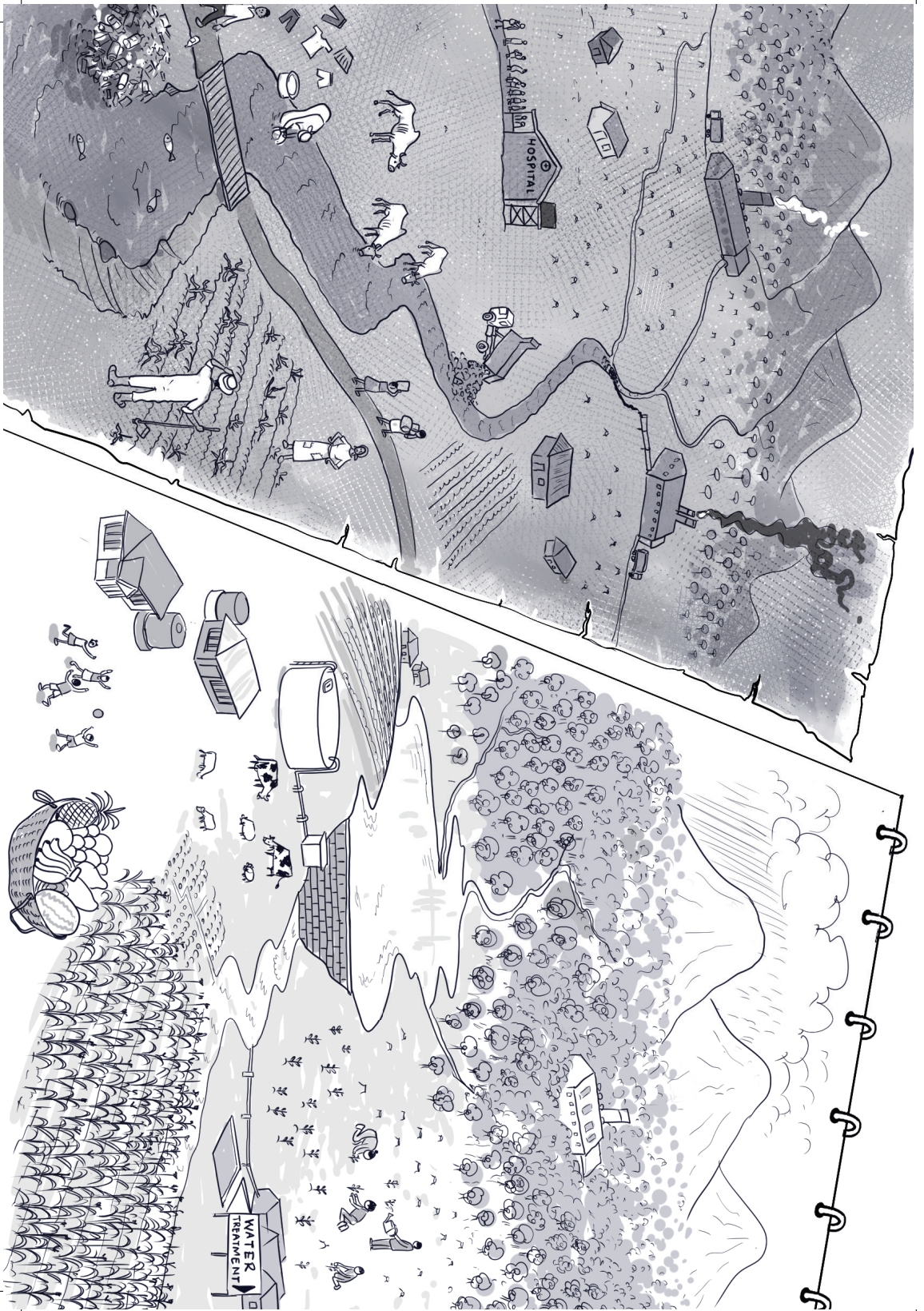
- » What is your understanding of sovereignty of the people as enshrined in the Constitution?
- » What is the role of the Church and other stakeholders in advocating for active citizen engagement?
- » What is my role in advocating for the rights and well-being of the marginalised and vulnerable in Kenya?

EXAMINATION OF CONSCIENCE

- » How have I been exercising my sovereignty? How have I respected or undermined the people's sovereignty?
- » Am I aware of what governs the sovereignty of Kenyans?
- » Do I hold public officials accountable for their actions and demand transparency and integrity in the exercise of power?

PROPOSED ACTIONS

- » Participate in initiatives organised by religious organisations on awareness creation on sovereignty.
- » Organise a walk on the Saturday dedicated to the weekly topic on sovereignty and plant commemorative trees.
- » Get involved in community work and initiatives aimed at the betterment of society.



WEEK TWO

RIGHT TO CLEAN SAFE AND ADEQUATE WATER

SEE: STORY

Maji Matamu village at the foot of the flourishing Divani Hills enjoyed an endless supply of spring water from the hills. The sufficient water supply enabled residents to farm continuously in the area that was surrounded by a thick forest famous for its rare medicinal plants, which villagers exchanged for other goods from afar.

Two companies were allowed to build on the hills to harvest and process spring purified water, and produce medicine from the raw materials in the forest. The authorising elders believed that the firms would benefit the villagers.

In the initial days, things moved on well and livelihoods were uplifted from the wages villagers earned from the companies. A year later, the villagers realised that their spring was drying up and the water in their streams was now contaminated. Their crops withered even with irrigation, trees were cleared for the pharmaceutical firm's raw materials and weather patterns changed drastically.

The community members started protesting against the companies but the village elders responded with brutal force, as they were the greatest beneficiaries of the companies' operations.

Religious leaders joined the villagers in pushing for change, and protection of their water source and livelihood. Eventually, the community elders were replaced. The community, under the guidance of religious and other opinion leaders, met with the company owners and agreed on how to share the water resources for the benefit of all. The destructive operations of the pharmaceutical company were halted. The villagers embarked on planting trees in the deforested areas and initiated programmes to protect the forest and the spring.

JUDGE: SITUATION ANALYSIS

Kenya occasionally experiences heavy rains in some parts during the year. Both human and animal lives are lost, crops are washed away and property is damaged. Most of the fresh water rain goes

to waste as it is never harvested for future use. The heavy rainfall seasons are often followed by prolonged dry spells which kill plants and animals from lack of food and water. The damage caused by both floods and drought is a clear indication of how deficient our disaster management strategies are.

From the 88 water towers identified by the Kenya Water Towers Agency, only 18 are gazetted, with the five major ones being the Mau Complex, Mount Kenya, Aberdare Ranges, Cherangany Hills and Mount Elgon. These water towers are a key catchment for 13 major rivers like Ewaso-Ng'iro, Mara, Makalia, Amalo, Molo, Mumberes, Naishi, Nderit, Njoro, Nzoia, Nyando, Sondu and Yala.

The rivers feed into five major lakes in Kenya and across the borders, including Lake Victoria, the source of River Nile that drains into the Mediterranean Sea. The Nile is a lifeline for millions of people in Uganda, South Sudan, Sudan and Egypt.

Unfortunately, about 28 million Kenyans lack access to safe water and 41 million cannot access improved sanitation. Growing water demand and scarcity are a notable challenge in Kenya. Climate change, population growth, urbanisation, water pollution and poor management of water resources have aggravated the country's water crisis, hurting economic activities, food security, education and health.

The sixth on the list of 17 United Nation's Sustainable Development Goals (SDGs) is about clean water and sanitation for all and the World Water Day is celebrated every March 22.

The right to clean, safe and adequate water is enshrined in the Article 43 of the Constitution. The Water Services Regulatory Board (WASREB) regulates ownership, use and management of water resources and services. The provision of clean, safe and adequate water is a devolved function. However, none of the 47 counties seem to have achieved provision of clean, safe, affordable and adequate supply of water.

Pope Francis reflects on the issue of water in his encyclical, *Laudato Si*. He says: "Water supplies (which is an issue of primary importance) used to be relatively constant, but now in many places demand exceeds the sustainable supply with dramatic consequences in the short and long term" (*Laudato Si no.28*). He points out the serious problem of the quality of water available to the poor. Dysentery and cholera, linked to inadequate hygiene and water supplies, are

a significant cause of suffering and infant mortality. Underground water sources in many places are threatened by pollution from certain mining, farming and industrial activities, especially in countries lacking adequate regulation or controls (*Laudato Si* no. 29).

We must be cautious of the throwaway culture which makes an individual wasteful and not to think of recycling the things that are at our disposal. We should not only think of industrial waste. Detergents and chemical products, commonly used in many places of the world, continue to be drained into our rivers, lakes and seas. Domestically, we lose water from leaks, pipe bursts and unattended running taps as we bathe or as we brush our teeth. We sometimes use more water than we actually need. Those who fetch water from considerable distances know well the value of every single drop of that water.

SPIRITUAL REFLECTION

Genesis 22:1-2, 9a, 10-13, 15-18

Romans 8:31b-34

Mark 9:2-10

Abraham is willing to obey God's command even in the most challenging circumstances. In him we see the importance of trust and obedience in the life of faith. Abraham is given the greatest of his trials and he is willing to obey silently and trustingly God's word even in very uncertain situations. This is what we are called to do: to entrust our life and future unconditionally to the God who calls us. Trials come into our lives so that our true orientation is manifested. We also see in the same reading that our merciful God is a God of life. He sends His angel to stop Abraham from inflicting death. God provides a ram as a substitute sacrifice, sparing Isaac's life. God protects and sustains life. Christ, who is prefigured in Isaac carrying the wood of sacrifice, carried the wood of the cross upon which He would be offered as the perfect sacrifice to give eternal life to humanity. We are invited to reflect on our willingness to surrender to God.

God gives us His unconditional love and support. He is on our side and nothing can stand against us. God's ultimate act of love, willingness to provide and sacrifice for us was by giving us His own Son for our redemption.

The Transfiguration is a reminder of Jesus' divinity and his authority. As divine, He is the source of all creation and in His authority calls on us to take care of this creation for which He gave life through His victory over death. Let us heed His voice, trusting in God's unconditional, providential, sustaining and caring love for us to take care of water, God's gift for the well-being of all. May we care for creation which we have been entrusted and, specifically, water and those creatures who rely upon it for their existence.

ACT: REFLECTION QUESTIONS

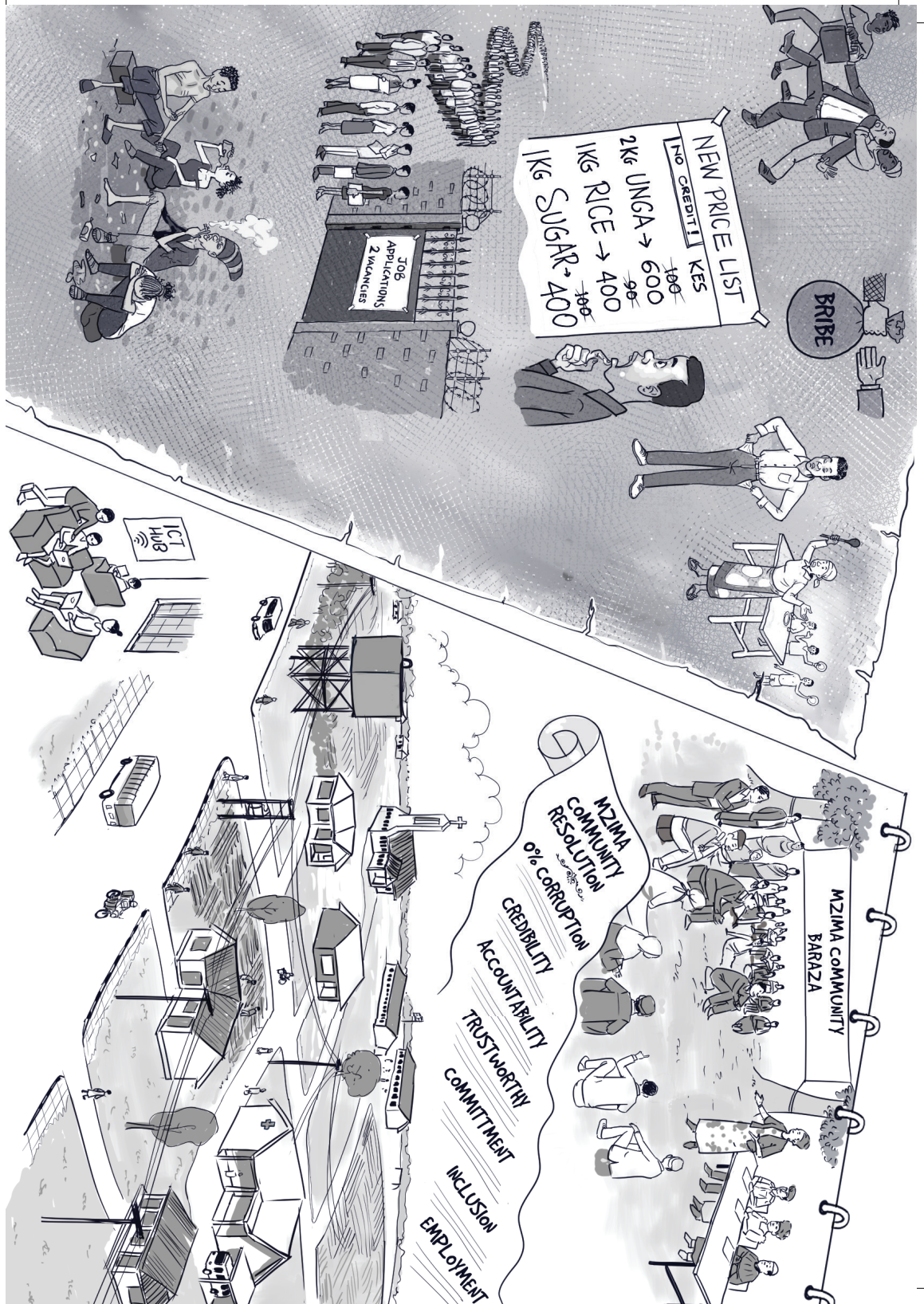
- » What issues of water conflicts have you encountered?
- » How easy is it for you to get water in your area?
- » Do you know any water tower in your area?

EXAMINATION OF CONSCIENCE

- » Do I close the tap when brushing my teeth?
- » Have I enabled my neighbour to access clean, safe and adequate water?
- » Do I properly dispose the waste in my home?

PROPOSED ACTIONS

- » Ask from nearby forest officers for the right trees to grow, particularly the types that are not harmful to the underground water table.
- » Plant and grow trees that help in water conservation.
- » Visit the nearest county water office to get relevant information on water provision and share with them about access to water in your area.
- » Plan to actively participate in the annual World Water Day.



NEW PRICE LIST
(NO CREDIT) KES

2Kg UNGA	→	100 600
1Kg RICE	→	90 400
1Kg SUGAR	→	100 400

BRIBE

JOB APPLICATIONS
2 VACANCIES

MZIMA COMMUNITY BARAZA

0% CORRUPTION

MZIMA COMMUNITY RESOLUTION

- CREDIBILITY
- ACCOUNTABILITY
- TRUSTWORTHY
- COMMITMENT
- INCLUSION
- EMPLOYMENT

ICT HUB

JOB APPLICATIONS
2 VACANCIES

WEEK THREE

CHALLENGES OF HIGH COST OF LIVING

SEE: STORY

The people of Mzima community lived in peace and were hard working. The environment was conducive for farmers, business people, fishermen and pastoralists. They ably catered for their basic needs. The elders and religious leaders were held in high regard on all matters of the community and were always consulted on the kind of leaders to elect. Elected leaders listened to the people and served them well.

But with time, the elected leaders started manipulating some elders and religious leaders, causing them to lose credibility. They forgot the electorate and involved themselves in corrupt deals which affected the economy negatively. Unemployment rose, taxation was increased and the cost of basic items such as unga, sugar, cooking oil, fuel, electricity and school fees shot up. Life became unbearable and households struggled to make ends meet.

Civil society organisations, the remaining credible religious leaders and elders met to discuss issues affecting the Mzima community. They agreed to restore the culture of consultation and integrity, and resolved to only elect future leaders vetted by the community. In the ensuing elections, the community elected leaders based on merit, integrity and credibility. Prices of basic commodities came down and the people experienced prosperity and peace of mind.

JUDGE: SITUATION ANALYSIS

According to the Kenya National Bureau of Statistics (KNBS), Kenya's current cost of living is the highest since 2017. The situation is aggravated by the global inflation and the aftermath of the COVID-19 pandemic. Matters have been compounded further by poor financial governance, mainstreaming corruption in budgeting, persistent droughts, budget deficits, ballooning debt, impunity, high public wage bill, bloated government and compromising influential people. The war in Ukraine is battering an already weakened global food system. Vast pastoral and marginal agricultural areas of eastern and northern Kenya suffer extreme weather conditions.

Climate change impacts are increasing and are being felt by ordinary

citizens across the country. The increasing high cost of living has only aggravated matters and the country requires a national discussion to address the challenges facing us. Our focus must consequently be on taking practical steps to get out of the current economic situation, with a clear plan to ensure that public funds are not lost in corrupt dealings. If people understand how their taxes are utilised in a transparent and accountable manner, and get the required services, they will cooperate.

The Catholic Bishops at their Ordinary Plenary Assembly in November, 2022, said: “We are concerned about the high cost of living in the country and the increased burden it is placing on the people. The price of essential household items such as maize flour, cooking oil, rice, cooking gas and electricity, among others, continues to be way above the reach of ordinary Kenyans, leaving millions struggling to put food on the table.”

The Bishops have in the past appealed for support of the vulnerable population in the society and called on the faithful to come out to support their brothers and sisters in need.

As a country, we require to develop fiscal sustainability which entails policies that promote economic growth, maintain economic credibility, a supportable debt position, and create stable and equitable taxes. Prudent fiscal policies and enforcement will help Kenya manage economic challenges.

As the country grapples with a more than Kshs10 trillion debt, the old adage of ‘live within your means,’ continues to ring in the minds of many. Debt repayment cost is a concern to all Kenyans and there is an urgent need for governance reforms to improve debt transparency, strengthen debt management policies and frameworks.

SPIRITUAL REFLECTION

Exodus 20:1-17 or 20:1-3, 7-8, 12-17

1 Corinthians 1:22-25

John 2:13-25

The Ten Commandments are a complex and challenging set of principles. God gave them to us to ensure we have a better world. They offer us a vision of a world where people are just and kind, and where everyone is treated with respect.

Definitely, Jesus will never tolerate a society where God's temple, that is the people constituting His body, are subjected to a life that is made unbearable by a few who want to remain in business. Promoting justice, relieving poverty and building the kingdom of God on earth is the responsibility of all individuals and institutions in society.

As Christians, our participation in economic life should be shaped by principles guided and inspired by our faith. As followers of Jesus Christ and participants in the economic life of our society, we are called to work for greater economic justice in the face of persistent growing cost of living. The economy exists for the person, not the person for the economy. The economic perspective employed should respect the God-given dignity of human beings.

The Christian message is of the cross, a stumbling block to those who are looking for signs or wisdom. But it is a message of hope and salvation to those who are called by God. Even though God's ways are not our ways, He often works in ways that we do not understand for the good of all. We can trust that His ways are always good and wise.

The God-given right to life and security of the basic necessities of life, such as food, clothing, shelter, education, health care, safe environment, and economic security should be respected and upheld. The cost of living should not force people to choose between what basic necessities to forego and keep. Society has a moral obligation, including governmental action where necessary, to assure opportunity, meet basic human needs and pursue justice in economic life.

A rise in cost of living causes economic exclusion. As Christians we need to do all we can to ensure no one is economically and socially excluded. As the Church we need to strive to stop this from happening. Let's become advocates for people who find it hard to be heard.

ACT: REFLECTION QUESTIONS

- » What is the impact of the high cost of living in your county, diocese, parish or village?
- » What practices can assist in mitigating the economic situation in the country?

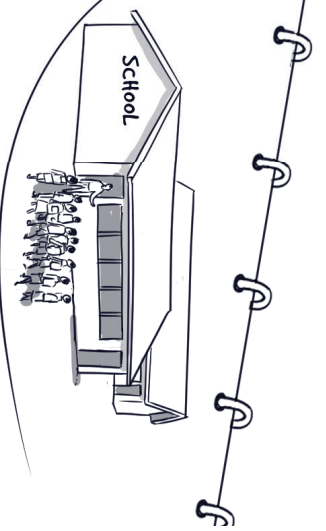
- » How can we address financial challenges, inflation and high cost of living in our families, villages, counties and country?

EXAMINATION OF CONSCIENCE

- » Have I made any effort to understand the cause of the high cost of living and taken personal commitment to alleviate the situation?
- » What practical steps can I take to reduce or cut on the high cost of living?
- » How have I contributed to the present economic situation in my family?

PROPOSED ACTIONS

- » Make a personal commitment to cut on unnecessary expenses.
- » Make and involve members of the family, institutions and all sectors on budget adjustments.
- » Take part in public participation forums on budgeting and commit to fight corruption.
- » Adopt a simple lifestyle.



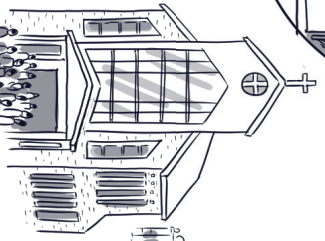
School



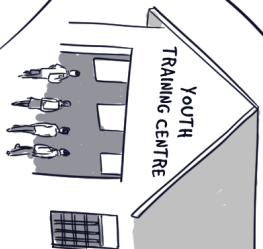
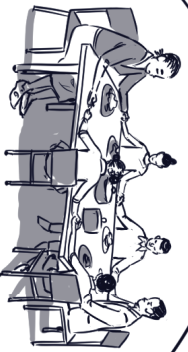
COUNSELLING



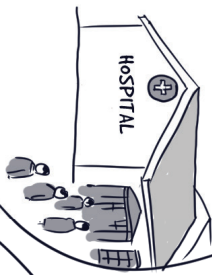
Small Christian Communities



FAMILY VALUES



YOUTH TRAINING CENTRE



HOSPITAL

WEEK FOUR RELIGIOUS EXTREMISM

SEE: STORY

Msito, a graduate of the University of Ukumbini and a staunch Christian has just completed his National Youth Service training. He has ventured into hawking in the hope that his dream of opening the first supermarket in the town will one day come true.

Sadly, he was involved in a road accident on the highway where he plied his trade when a lorry veered off the road and knocked pedestrians and roadside traders. This prompted the local government to restrict all hawking activities along the highway. On discharge from the hospital, he found his house locked by the landlord over rent arrears. His loan request from his church youth account was declined. The resulting frustration forced him to stop going to church.

His friend Potosha who owned a wholesale shop in the town hosted him and provided for his daily sustenance. Msito came to learn that Potosha was in a secret group that preached the prosperity gospel, which supported mass accumulation of wealth regardless of the means and advocated for radical stances such as dying for their faith as they believed the world only provided a temporary residence. Msito wanted to live like Potosha, who agreed to assist him on strict instructions to maintain confidentiality. He was instructed to be collecting packages placed at his doorstep by individuals unknown to him every fortnight. Later, he was introduced to macabre night rituals and sacrificial ceremonies.

Numerous cases were reported of people being abducted and later found dead with some body organs missing. These incidents alarmed the community and some members volunteered to help the police to patrol the town. To their surprise, they found that all those involved were associates of Potosha who had by then escaped. Investigations revealed that he was engaged in organ trafficking in collaboration with individuals suspected of devil worship.

Msito and his affiliates were victims of their naivety and were imprisoned out of ignorance and greed for quick wealth. Sensitisation programmes and psychosocial support trainings were initiated to empower the community.

JUDGE: SITUATION ANALYSIS

There is a thin line between religious extremism and terrorism. Perpetrators of this vice embrace theories that sanction violence in the service of God. Despite these agonising manifestations, religions have imparted huge spiritual and moral values, which continue to guide people in this troubled world. Religion is meant to lift people's vision beyond purely material conceptions of reality to embrace higher notions of justice, reconciliation, love and selflessness in the service of the common good of humanity and society.

There are several reasons for religious extremism whose effects on society is detrimental. In African traditional religion, it has bred unnecessary ethnic conflicts and loss of lives in the name of 'sacred' revelations from the gods. Family members who choose to abstain from such practices attract penalties or expulsion from the family.

Religious exclusivism opens up for ignorance and negative use of historical factors, thus creating contention and antagonism among followers. Inadequate information or ideas about religious dogmas compels people to engage in competition. Thus, they misrepresent their religious institutions, causing some followers to be anti-social and extremist in their modes of association and actions.

Pope Francis in his address during the 7th Congress of the leaders of world and traditional religions in Kazakhstan in September, 2022, said that "authentic religiosity" is needed to fight fundamentalism and extremism in religion and to show the world that it has no reason to distrust or have "contempt for religion as if it were a destabilising force in modern society. Religion is not a problem, but part of the solution for a more harmonious life in society."

Human traffickers and illegal organ harvesters have often hidden behind religion to prey on their victims. People have masqueraded as religious leaders out to support medical bills and other needs. Others enrich themselves through cultic practices.

The Catholic Bishops in Kenya in their statement titled *Condemnation of Shakahola deaths and call for implementation of the religious societies rules*, said: "It is very unfortunate that we are witnessing a worrying reality in the country where so-called prophets and cultic leaders have mastered the art of exploiting gullible Kenyans in the name of religion. In the process, their innocent followers have lost money, property and now lives. We wish to inform Kenyans that cultism is a dangerous phenomenon and they must always remain on

their guard. Cultic leaders usually have a very tight grip on their followers whom they influence to believe that they are always right and have exclusive knowledge of the truth.”

All religions should preach tolerance to promote peaceful co-existence and unity in society. The Government should stamp its authority and good intentions to protect people against wolves, and should not shy away from halting registration of worship centres that do not meet the required standards. There is need for an urgent screening system to identify personification of religious leaders and institutions who offer improper religious teaching. 1 John 5: 20-21 says: “We also know that the son of God has come and has given us discernment to know the one who is true and we are in the one who is true in his son Jesus Christ. He is the true God and eternal life. Children, be on your guard against idols.”

SPIRITUAL REFLECTION

2 Chronicles 36:14-16, 19-23

Ephesians 2:4-10

John 3:14-21

The first reading reminds us that choosing other gods or worshipping the wrong way, just like any sin, has consequences. When we turn away from God, we open ourselves up to his judgment. But even in the midst of judgment, God is still merciful. He is always willing to forgive us and restore us to his favour.

In the second reading, St Paul tells us that salvation cannot be earned by our own efforts. It is a gift from God received by faith in Jesus Christ. Our salvation is a pure act of God’s great love for us and not as a result of anything we have done. God’s love is so great that he sent his Son, Jesus Christ, to die on the cross for our sins. Religion is about God sharing His salvific love to us humans. It has no room for violence or hatred for the other. Religious extremism is the work of darkness. Those who are part of it for sure are not in the Light that is pure love and salvation. We need to approach religious extremism with caution, discernment and dialogue. It’s important to recognise the value of religious freedom, while condemning acts of violence committed in the name of religion. Emphasis has to be on the search for truth, the promotion of peace and respect for human dignity in conformity with the teaching that on the primacy of love and charity toward God and toward our neighbour. Jesus

taught his disciples to love their enemies and pray for those who persecute them (Matthew 5:44). He also established love of God and neighbour as the two most crucial commandments (Mark 12:29-31).

As we search for the truth in faith, we also need to promote peace and harmony between different religious communities. Saint Augustine advocated the resolution of conflicts by peaceful means and fraternal reconciliation. Saint John Chrysostom emphasised love and mercy towards all human beings. We are called to engage in authentic, sincere and respectful interreligious dialogue to foster mutual understanding and peaceful co-existence, and build a more just and fraternal world.

ACT: REFLECTION QUESTIONS

- » Which socio-economic and religious challenges have you faced as a Christian?
- » What can we do to strengthen our faith as a family, Small Christian Community and society?
- » As an individual or collectively, how would you handle religious extremism?

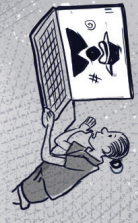
EXAMINATION OF CONSCIENCE

- » How do I understand my faith?
- » Have I ever doubted my faith? Am I proud of it?
- » How do I relate with other believers and non-believers around me?
- » At times, others have judged my faith wrongly, what have I done to defend it?

PROPOSED ACTIONS

- » Respect and uphold the Social Teaching of the Church.
- » Strengthen our faith in the teachings of the Church.
- » Strengthen inter-faith and intra-faith dialogues.
- » Build a peaceful, inclusive and just society through respecting, protecting and promoting human rights.

GBV



CYBER BULLYING

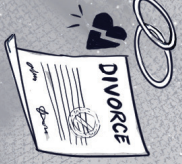
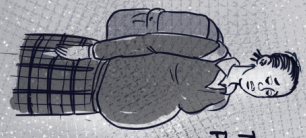


FORCED MARRIAGE

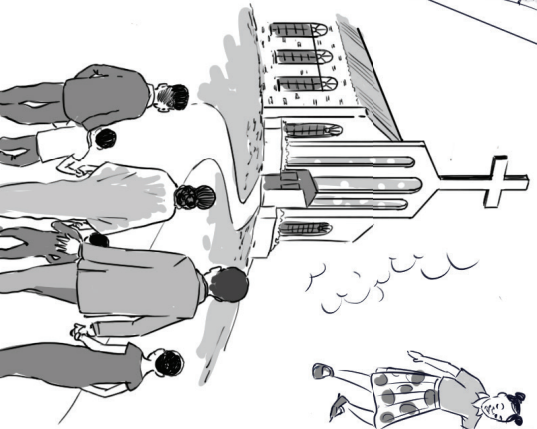


LGBTQ

TEENAGE PREGNANCY



FGM



WEEK FIVE

EMERGING THREATS TO THE FAMILY

SEE: STORY

The family of Mr and Mrs Kiboko and their three children lived in Almasi town. They went to church, prayed together and had regular family meetings. Mr Kiboko was a successful trader who travelled far and wide, while his wife was a community social worker. With time, demand for their services rose, offering them an opportunity to increase the family wealth.

With the parents absent most of the time, joint family activities, including going to church and prayers stopped. Shaba, the firstborn, passed her exams and secured an overseas university scholarship.

Her teenage sibling, Teke, was a student in a nearby secondary school which never provided spiritual care. One evening after school, he was invited to a friend's birthday party where he was introduced to drugs. With time, he got hooked, became a peddler, engaged in homosexuality and eventually abandoned school.

Mtaki, the last born, left the country for a job overseas. On arrival, she was taken to a residential house and locked up together with other girls. Their travel documents were confiscated. She was later coerced into prostitution, forced labour and serious assault.

Efforts by Mr and Mrs Kiboko to reach out to their children failed. They became frustrated, regretted not spending quality time with them and no longer appreciated the monies they were running after.

One day, Mtaki escaped to a faith-based rescue centre, where she surprisingly met her sister, Shaba, who was working as an accountant. Mtaki was counselled and given pastoral care. The sisters decided to return home and started efforts to rehabilitate their brother. They were happy to reunite with their retired parents.

JUDGE: SITUATION ANALYSIS

The family is the basic unit of the social fabric of society and the threats directed at it are gradually causing its disintegration. Many people live in broken and dysfunctional families afflicted by lack of parental care, divorce, separation, domestic violence, child labour and trafficking, same sex marriages, incest, diseases, moral decadence, alcoholism, drug and substance abuse, secularism

and influence of media and technology, among others. A well-composed family can easily counter some of these challenges. The family is composed of the father, the mother and children who are a gift from God. Simply, “a man and a woman united in marriage, together with their children, form a family” (*The Catechism of the Catholic Church* no. 2202).

The Church recognises that the family exists prior to the State or any other community, and possesses inherent rights which are inalienable (*The Holy See, Charter of the Rights of the Family, October 22, 1983, D*). Consequently, the family is the key element in the formation of a person’s character and attitudes towards the society. The responsibility of the formation of children is the mission of the family given by God. To be a successful family and to achieve the full flowering of its life and mission, the family must be a kind of school of deeper humanity. It needs kind communion of minds with clear roles, spending time together, communicating well, adapting to stressors, appreciating and encouraging one another.

In his 2015 address in the Philippines, Pope Francis noted that: “The economic situation has caused families to be separated by migration, the search for employment and financial problems.” In recognition of this important role of the family in society, the Church demands that both the national and international community “must protect the family through measures of a political, economic, social and juridical character, which aim at consolidating the unity and stability of the family so that it can exercise its specific function” (see *The 1983 Vatican Charter of the Rights of the Family*). This has been enshrined in Article 18 of the *African Charter on Human and People’s Rights* of 1981. Article 45(1) and (2) of the Constitution states: “The family is the natural and fundamental unit of the society and the necessary basis of social order, and shall enjoy the recognition and protection of the state. Every adult has the right to marry a person of the opposite sex, based on the free consent of the parties.” Section 30 of the *Children’s Act of 2022* lists duties and responsibilities of the child, equal parental responsibility, and safeguards the right and best interests of a child.

SPIRITUAL REFLECTION

Ezekiel 37:12-14

Romans 8:8-11

John 11:1-45 or 11:3-7, 17, 20-27, 33b-45

In the first reading, prophet Jeremiah tells us that God is always faithful to his promises, even when his people are unfaithful. God's love is greater than our sin. God wants to have a personal relationship with each of us. His new covenant is a promise of salvation and hope for all people.

The second reading tells us that Jesus, our High Priest, is fully human and divine. He was obedient in His suffering and offers us forgiveness and salvation. He understands our pain and suffering.

In the Gospel, St John tells us that Jesus is worthy of our worship and devotion. He is God who was willing and died for our sins. But His death was not the end. He rose from the dead, hence, conquering death once and for all. And so, we should not be afraid of death. Jesus loves us so much to the point of willingly sacrificing Himself for our sake. Death will never have the last word because Jesus has conquered.

Jesus protects the family from the threat it faces today. Every threat to the family is a threat to society itself. We have to be a prophetic witness in a world facing attacks on marriage and life.

The current threats against the family can be overcome by having good and strong families. God calls upon us to recognise the dangers threatening our own families and to protect them from harm. Our families should be sanctuaries of respect for life, proclaiming the sacredness of every human life from conception to natural death.

Our families must be places of prayer, learning to know God and be part of his Church, and to love, forgive and be virtuous. Our families are our greatest treasure. They need to be holy and loving to protect the beauty and truth of the family in God's plan and to be a support and example for other families.

The many pressures on family life today include the continued effects of natural disasters, economic difficulties and unemployment. While many people live in dire poverty, others are caught up in materialism and lifestyles which destroy family life and the most basic demands of Christian morality. We have a "Christian duty to be prophetic voices in the midst of our communities."

"When families bring children into the world, train them in faith and sound values, and teach them to contribute to society, they become a blessing in our world," says Pope Francis. "God's love becomes present and active by the way we love and by the good works that we do."

Families should also care for those in need, and “especially to show concern for those who do not have a family of their own, in particular those who are elderly and children without parents.” They should never feel isolated, alone and abandoned, but helped to know that God has not forgotten them.

ACT: REFLECTION QUESTIONS

- » What is the family’s role in instilling and upholding moral values?
- » What emerging threats affect me, my family and community at large?
- » What role do religious institutions and schools play in addressing the challenges facing families?

EXAMINATION OF CONSCIENCE

- » How am I involved in promoting family values and contributing to countering emerging threats to the family?
- » Have I lived my sexuality with Godly joy and dignity, avoiding immorality and other societal vices?
- » Have I organised or participated in family meetings?

PROPOSED ACTIONS

- » Establish, promote and strengthen family life programmes in the Small Christian Community, parish and community.
- » Strengthen and establish (church-led) mentorship programmes for PMC, youth, CMA, CWA and families.
- » Set up programmes that support families to enhance their sources of livelihood.

2023 LENTEN CONTRIBUTIONS (KSHS)

Archdiocese of Nairobi	3,200,875.00
Archdiocese of Nyeri	2,113,610.00
Archdiocese of Kisumu	1,914,941.00
Archdiocese of Mombasa	530,000.00
Diocese of Bungoma	2,200,000.00
Diocese of Eldoret	1,611,537.00
Diocese Of Embu	950,000.00
Diocese of Garissa	94,400.00
Diocese of Homa Bay	656,970.00
Diocese of Isiolo	120,000.00
Diocese of Kakamega	3,100,000.00
Diocese of Kericho	602,325.00
Diocese of Kisii	700,000.00
Diocese of Kitale	360,000.00
Diocese of Kitui	504,046.00
Diocese of Lodwar	180,000.00
Diocese of Machakos	3,183,021.00
Diocese of Malindi	150,000.00
Diocese of Maralal	250,000.00
Diocese of Marsabit	527,922.00
Diocese of Meru	3,193,877.00
Diocese of Muran'ga	609,303.00
Diocese of Nakuru	200,000.00
Diocese of Ngong	1,096,572.00
Diocese of Nyahururu	785,688.00
Military Ordinariate	490,376.00
Diocese of Wote	-
SUB-TOTAL	28,625,463.00

INSTITUTIONS

Association of Sisterhoods of Kenya (AOSK)	100,000.00
Administration Police (AP)	50,000.00
Catholic Bookshop	16,132.00
Kenya National Council of Catholic Women (KNCCW)	40,000.00
Kenya Wildlife Service (KWS)	15,000.00
Religious Superiors Council of Kenya (RSCK)	60,000.00
St Thomas Aquinas Seminary	25,520.00
St Mathias Mulumba Senior Seminary, Tindinyo	126,693.00
Kisii University Chaplaincy	13,750.00
Tangaza University	5,000.00
	452,095.00
GRAND TOTAL	29,077,558.00

ARCHDIOCESE OF NAIROBI**PARISH****MAKADARA DEANERY**

Blessed Sacrament, Buruburu	77,000.00
Holy Trinity, Buruburu	73,882.00
Mary Magdalena, Kariokor	11,700.00
Our Lady Of Visitation, Makadara	78,000.00
St Joseph and Mary, Shauri Moyo	35,370.00
St Joseph, Jericho	30,000.00
St Mary, Mukuru	22,420.00
St Teresa, Eastleigh	50,000.00
	378,372.00

CENTRAL DEANERY

Holy Family Minor Basilica	70,061.00
Our Lady Queen of Peace, South B	110,000.00
St Catherine of Alexandria, South C	50,500.00
St Francis Xavier, Parklands	40,361.00
St Paul Chapel, UON	41,600.00
St Peter Claver's, Racecourse Road	41,000.00

Shrine of Mary Help Of Christian, Upper Hill	151,776.00
----------------------------------------------	------------

505,298.00**KABETE DEANERY**

Consolata Shrine, Westlands	80,000.00
Holy Trinity, Kileleshwa	264,286.00
St Austin, Muthangari	76,414.00
St Catherine of Sienna, Kitusuru	247,710.00
St Raphael, Kabete	43,370.00
Holy Rosary, Ridgeways	110,000.00
St Joseph The Worker, Kangemi	203,605.00

1,025,385.00**EASTERN DEANERY**

Christ The King, Embakasi	85,628.00
Divine Word, Kayole	100,000.00
Holy Family, Utawala	80,000.00
Mary Immaculate, Mihang'o	100,000.00

St Annie and Joachim, Soweto	145,800.00	St Clare, Kasarani	115,800.00
St Joseph Freindametz, Ruai	58,000.00	St Dominic, Mwiki	50,000.00
St Monica, Njiru	79,800.00	St Joseph Mukasa, Kahawa West	160,000.00
St Peter, Ruai	41,922.00	St Joseph, Kahawa Sukari	280,869.00
St Vinicent, Kamulu	44,500.00		1,332,955.00
	735,650.00	THIKA DEANERY	
OUTERING DEANERY		Immaculate Conception, Kilimambogo	40,000.00
Assumption of Mary, Umoja	613,419.00	St Benedetta, Ngoingwa	94,190.00
Divine Mercy, Kariobangi South	85,000.00	St Patrick's, Thika	134,737.00
Holy Cross, Dandora	50,600.00	St Matia Mulumba, Thika	380,000.00
Holy Innocent, Tassia	193,000.00	St Maria Magdalena, Munyu	18,350.00
Holy Trinity, Kariobangi North	117,642.00		667,277.00
St Jude, Doonholm	216,445.00	RUIRU DEANERY	
	1,276,106.00	Presentaion of Lord, Juja Farm	25,000.00
WESTERN DEANERY		St Augustine, Juja	100,600.00
Christ The King, Kibra	65,000.00	Mary Immaculate, Kumura	62,595.00
Mary Queen of Apostles, Dagoretti Market	59,300.00	St Christopher, Kimbo	65,163.00
Our Lady of Guadalupe, Adams Arcade	120,000.00	St Francis Of Assisi, Ruiru	1,013,107.00
Regina Coeli, Karen	120,000.00	St Lucia, Membly	20,000.00
Sacred Heart, Dagoretti Corner	215,165.00	St Peter, Kwhihota	133,000.00
St John The Evangelist, Langat'a	115,000.00	St Teresa, Kalimoni	85,712.00
St Micahel, Otiende	67,600.00		1,505,177.00
	762,065.00	GATUNDU DEANERY	
RUARAKA DEANERY		Archangle Gabriel, Mutomo	20,000.00
Christ The King, Githurai Kimbo	68,825.00	Christ The King, Karinga	6,125.00
Holy Mary Mother of God, Githurai	205,285.00	St Stephen, Ituuru	11,840.00
Madre Teresa, Zimmerman	30,500.00	Mary Help of Christian, Ndundu	41,200.00
Our Lady of Consolata, Kahawa Farmers	108,866.00	Our Lady of Annuciation, Gatitu	10,000.00
Queen of Apostles, Ruaraka	92,610.00	St John The Baptist, Munyu-Ini	15,000.00
Sacred Heart, Babadogo	79,200.00	St Joseph, Kiganjo	30,000.00
St Benedict, Thika Road	141,000.00	St Joseph, Mutunguru	10,000.00
		Uganda Martyrs, Gatundu	14,150.00

158,315.00		LIMURU DEANERY	
GITHUNGURI DEANERY		St Charles Lwanga, Kamirithu	10,110.00
All Saints, Komothai	21,355.00	Our Lady of Mount Carmel, Ngarariga	34,580.00
Holy Family, Githunguri	11,400.00	St Joseph, Limuru	16,765.00
Holy Spirit, Miguta	10,000.00	St Andrew, Rironi	9,120.00
Nativity of Our Lady, Kagwe	15,000.00	St Charles Lwanga, Githirioni	20,000.00
Our Lady of Assumption, Kambaa	20,000.00	St Francis , Limuru Town	29,320.00
St John The Evangelist, Githiga	25,000.00	St Joseph, Kereita	9,500.00
St Teresa of Child Jesus, Ngenya	10,000.00		
			129,395.00
112,755.00		MANG'U DEANERY	
KIAMBU DEANERY		Our Lady of Fatima - Kiriko	20,000.00
All Saints, Riara	73,000.00	Our Lady of Holy Rosary- Kamwangi	25,000.00
Holy Rosary, Ikinu	36,635.00	St Annie, Mataara	11,900.00
Our Lady of Holy Rosary, Ting'ang'a	70,000.00	St John The Baptist, Mang'u	25,740.00
Our Lady of Victories, Lioki	43,000.00	St Peter, Nyamang'ara	35,000.00
St Joseph, Gathanga	15,000.00	St Stephen, Kairi	9,500.00
St Martin De Porres, Karuri	64,537.00	St Teresa, Kiangunu	15,000.00
St Peter and Paul, Kiambu	130,000.00	St Teresa of Avila, Gachege	3,000.00
St Stephen, Gachie	47,115.00		
			145,140.00
479,287.00		CHAPLAINACIES AND INSTITUTIONS	
KIKUYU DEANERY		Kenyatta National Hospital	13,050.00
Holy Cross, Thigio	12,000.00	Kenyatta University	48,514.00
Holy Eucharist, King'eero	50,000.00	Vincentian Prayer House, Thika	50,000.00
Immaculate Conception, Gicharani	20,000.00	Sisters of St Joseph of Tarbes	3,000.00
Our Lady of Holy Rosary, Ruku	13,000.00	Vendramini Education Centre	20,700.00
St Peter The Apostle, Kikuyu	21,600.00	Apostolic Carmel Sisters, Utawala	20,000.00
St Charles Lwanga, Waitihaka	15,100.00	Vincentian Prayer House, Lavington	20,000.00
St John The Baptist, Riruta	70,000.00	Elite Chris Academy	-
St Joseph, Kerwa	31,255.00		
St Joseph, Muguga	17,000.00		
St Peter The Rock, Kinoo	16,250.00		
	266,205.00	SUB-TOTAL	175,264.00
		GRAND TOTAL	9,654,646.00
		TO KCCB-CJPD	3,200,875.00

ARCHDIOCESE OF NYERI

PARISH			
St Teresa, Equator	408,618.00	Doldol	12,000.00
Our Lady of Consolata, Nyeri Cathedral	372,336.00	St Martin's Wiyumiririe Mission	35,000.00
Karima	97,980.00	St Cyprian, Kagicha	84,430.00
Ngandu	58,350.00	Endarasha	60,000.00
Giakaibe	134,000.00	Kahiraini	50,000.00
Nanyuki	188,000.00	Kiamuiru	68,470.00
St Jude	96,147.00	Kigumo	75,340.00
Mweiga	118,535.00	Kalalu	40,225.00
King'ong'o	118,674.00	Gititu Catholic	60,000.00
Matanya	112,700.00	St Joseph, Kamariki	34,200.00
Othaya	151,877.00	Karemeno	28,410.00
Mukurweini	96,500.00	Kariko	84,000.00
Kabiruini	20,000.00	Gikondi	35,730.00
Irigithathi Project	82,400.00	Kaheti	30,000.00
Karatina	209,150.00	St Vincet de Paul, Giathugu	20,600.00
Mwenji	20,000.00	Kigogoini Catholic	40,000.00
Our Lady of Consolata, Thegu	40,130.00	Karangia Catholic	46,020.00
Our Lady of Consolata, BIRTHIA	62,313.00	St Michael, Chaka	31,200.00
Tetu	43,750.00	Mugunda Catholic	22,000.00
St. Joseph, Giakanja	35,756.00	Munyu Catholic	60,000.00
Miiri	41,700.00	Kimondo Catholic	26,000.00
Ithenguri	15,450.00	St Joseph, Karuthi	21,520.00
Gikumbo	77,950.00	Kamatu Catholic	34,150.00
St Charles Lwanga, Ngangarithi	60,000.00	Witima Catholic	16,000.00
St Charles Lwanga, Narumoru Town	48,750.00	SUB-TOTAL	4,002,288.00
Gathugu	120,190.00	INSTITUTIONS	
Sirima	52,717.00	SMI Our Lady of Lourdes, Mweiga	3,000.00
Kangaia	50,000.00	Christ the King Major Seminary	68,200.00
Wamagana	24,920.00	Mathari Chaplaincy	3,500.00
Gatarakwa	28,100.00	ADN Caritas Nyeri	15,000.00
		ADN Catholic Action	50,000.00

Franciscan Sisters	5,000.00	Blessed Allamano Mathari	5,000.00
Mother Angela Huruma Hospital, Nanyuki	38,000.00	Hill Farm Staff	4,900.00
Archbishop's Residence	20,000.00	Unallocated	3,000.00
Archbishop Emeritus' Residence	6,331.00		224,931.00
Holy Angels Sisters	3,000.00	GRAND TOTAL	4,227,219.00
		TO KCCB-CJPD	2,113,609.50

ARCHDIOCESE OF KISUMU

PARISH			
St Theresa's Cathedral	360,000.00	Ojola Parish	61,250.00
Ndori Parish	305,450.00	Sigomere Parish	60,000.00
Magadi Parish	225,000.00	Ukwala Parish	60,000.00
St Paul's Kanyakwar	219,294.00	Katito Parish	51,700.00
St Pantaleon Parish	200,000.00	Ugunja Parish	51,250.00
Chiga Parish	188,000.00	Mban Parish	51,000.00
Barkorwa Parish	168,000.00	Mbaga Parish	50,000.00
Milimani Parish	166,102.00	Muhoroni Parish	50,000.00
Ramba Parish	150,000.00	Kusa Parish	45,000.00
Holy Cross Parish	120,000.00	Reru Parish	44,500.00
Bondo Parish	115,000.00	Raliew Parish	40,000.00
Koru Parish	114,770.00	Kawuondi Parish	40,000.00
Nyamasaria Parish	101,000.00	Yogo Parish	40,000.00
Riwo Parish	100,000.00	Nyadorera Parish	40,000.00
Lwak Parish	100,000.00	Ahero Parish	40,000.00
Nyalenda Parish	90,000.00	Masogo Parish	39,070.00
Uradi Parish	87,250.00	Nyagondo Parish	36,000.00
Yala Parish	68,000.00	Nyamonye Parish	34,000.00
Nyabondo Parish	81,000.00	Obambo Parish	33,100.00
Kianja Parish	80,000.00	Sega Parish	32,400.00
Nyawita Parish	72,000.00	Rabuor Parish	32,000.00
Kogola Parish	70,000.00	Kajulu Parish	31,400.00
Madiany Parish	65,000.00	Mutumbu Parish	30,000.00
Nyangoma Parish	63,390.00	Uwai Parish	30,000.00

Kowet Parish	30,000.00	St Sylvester's Girls Madiany	16,215.00
Withur Parish	30,000.00	Xaverian Mixed Secondary	15,000.00
Awasi Parish	27,000.00	Sega Girls Primary Boarding	13,480.00
Aluor Parish	25,000.00	St Mark's Obambo Secondary	12,550.00
Barding Parish	20,000.00	St Mary's Nyagondo Secondary	12,400.00
Consolata Shrine Buoye	20,000.00	St Joseph's Secondary	10,960.00
Tamu Parish	20,000.00	St Robert Ndigwa Secondary	10,000.00
Nduru Parish	16,800.00	St Peter's Kajulu Secondary	10,000.00
Usenge Parish	15,700.00	Ngere Kagoro	10,000.00
Kajimbo Paish	15,000.00	St Anne's Ahero Primary	8,000.00
Bolo Parish	15,000.00	St Stephen Menara Boys Secondary	6,700.00
Katolo Parish	15,000.00	Madiany Primary	6,600.00
Nanga Parish	10,570.00	Ugenya High Secondary	6,550.00
Rang'ala Parish	10,000.00	Dr Aloo Gumbi Secondary	6,500.00
Kibuye/Bondo Parish	5,000.00	St Elizabeth Mary Girls Secondary	6,000.00
SUB-TOTAL	4,606,996.00	St Aloys Mayenya Secondary	5,750.00
SCHOOLS		Kirembe Secondary	5,340.00
St Barnabas Girls High	123,200.00	Masamra Secondary	5,280.00
St Mary's Yala	108,000.00	Barkowino Secondary	4,935.00
St Mary's Lwak Girls	99,442.00	St Sylvester's Anyiko Secondary	4,705.00
Xaverian Primary	80,300.00	St Lazarus Ndori Primary	4,550.00
Koru Girls' High	80,000.00	St Gilbert Angira Secondary	4,405.00
Nyabondo Boys High	42,000.00	St Anthony Ragumo Primary	4,050.00
Bishop Okoth Mbaga Girls	40,000.00	Our Lady Queen of Peace Muhoroni	4,000.00
Sigoti Girls High	32,000.00	St Raymond Learning Centre	3,770.00
Fr Gullick Girls Uradi	21,000.00	Chiga Primary	3,505.00
St Cecilia Aluor Girls	21,000.00	Omungi Primary	3,355.00
St Ignatius Magadi Secondary	20,405.00	Magadi Primary	3,350.00
St Anne's Maseno Chaplaincy	20,300.00	Our Lady of Grace Primary	3,200.00
Bishop Okoth Ojola Girls	20,000.00	St Francis Nyamonge Primary	3,000.00
St Anne's Sega Girls	20,000.00	Lwak Girls' Primary Boarding	3,000.00
St Theresa's Girls Kibuye	20,000.00	Jera Secondary	3,000.00

Sega Township Secondary	3,000.00	Nyamasore Primary	1,150.00
St George's Secondary	2,930.00	Achuodho Primary	1,070.00
Kunya Primary	2,860.00	Ndigwa Primary	1,050.00
St Mary Montessori Primary	2,675.00	Masawa Primary	1,020.00
St George's Sianda Secondary	2,500.00	St Mary's Mayenya Primary	1,000.00
Nyamonge Primary	2,285.00	Misori Primary	1,000.00
Ranyala Primary	2,200.00	Ramba Boys Secondary	1,000.00
Ayaro Primary	2,170.00	St Christopher Kolunga Primary	1,000.00
Wayaga Primary	2,170.00	St Thomas Ulumba Primary	1,000.00
St Anne's Girls Primary Boarding	2,140.00	St Anthony Pala Kobong Secondary	900.00
Kagilo Primary	2,020.00	St Edward Masamra Primary	850.00
St Gabriel's Gagra Mixed Secondary	2,000.00	Ndonyo Primary	850.00
St Peter's Kajulu Secondary	2,000.00	Bungu Primary	830.00
St Peter's Kajulu Primary	2,000.00	Kabondo Primary	820.00
Our Lady Of Lourdes Siwar Secondary	2,000.00	Okago Primary	810.00
Yao Primary	1,825.00	Obinju Primary	750.00
Obino Primary	1,800.00	Radienya Primary	710.00
Angira Primary	1,750.00	Prof Peter Anyang Nyongo Secondary	700.00
St Thomas Aquinas Awanya Primary	1,700.00	St Sylvester's Anyiko Primary	700.00
Our Lady Of Lourdes Siwar Primary	1,700.00	Kadete Primary	600.00
Kayundi Primary	1,660.00	Kusa Primary	550.00
Rweya Primary	1,500.00	Alango Primary	515.00
St Paul's Mbagi Mixed Secondary	1,500.00	Ong'adi Primary	500.00
Rabel Primary	1,500.00	St Anne's Rachilo Primary	500.00
Nyasidhi Primary	1,550.00	St Fredrick Ligusa Primary	500.00
Konim Secondary	1,500.00	Kayieye Special School	500.00
St Cornelius Ramula Secondary	1,400.00	St Martin Special School	500.00
Nyagondo Primary	1,385.00	Nyabondo Day Primary	500.00
St Mary Magdalene Primary	1,300.00	Ochol Primary	500.00
Kibuye/Bondo Primary	1,300.00	Achego Primary	500.00
Mituri Primary	1,300.00	Olwa Primary	455.00
Pala Kobong Primary	1,235.00	G.P. Owiti Secondary	300.00

Kochieng Primary	300.00	Father's House Magadi	7,000.00
St Mark's Kagilo Secondary	300.00	St Francis Ecd College	5,000.00
Barkatado Primary	260.00	Siaya Prisons Chaplaincy	4,250.00
St John Malunga Secondary	145.00	Father's House, Ojolla	3,350.00
Siriwo Primary	80.00	Father's House, Kusa	3,000.00
SUB-TOTAL	1,053,367.00	Lwak Fssa Postulancy	3,000.00
INSTITUTIONS		Bethany Fssa Community	3,000.00
KCCB Acts Kisumu	12,500.00	St Augustine's Kisumu Polytechnic	1,400.00
Holy Family Mission Hospital	11,600.00		84,460.00
St Elizabeth Lwak Hospital	11,200.00	GRAND TOTAL	5,744,823.00
St Elizabeth Chiga Hospital	10,150.00	TO KCCB - CJPD	1,914,941.00
G.K. Prisons Chaplaincy	9,010.00		

ARCHDIOCESE OF MOMBASA

PARISH			
Allidina	33,850.00	Kilifi	69,733.00
Bamba	6,700.00	Kinango	8,500.00
Bangladesh	35,150.00	Kitumbi	10,300.00
Bomu	34,450.00	Kongowea	85,000.00
Bura	18,050.00	Likoni	70,000.00
Bura Girls High school	12,000.00	Lungalunga	5,300.00
Chaani	64,560.00	Lushangonyi	38,820.00
Chala	6,000.00	Makitau	10,500.00
Changamwe	110,950.00	Makupa	30,000.00
Chonyi	6,450.00	Manyani Prisons KWS	5,000.00
Eldoro	8,000.00	Mariakani	21,000.00
Giriama	11,800.00	Matanomane	4,700.00
Holy Ghost Cathedral	213,426.00	Maungu	2,400.00
Kaloleni	20,150.00	Mbungoni	62,150.00
Kichakasimba	15,250.00	Mgange Dawida	20,705.00
Kiembeni	20,614.00	Mgange Nyika	15,830.00
Kikambala	8,530.00	Migombani	8,300.00
Kikoneni	26,340.00	Mikindani	60,000.00

Miritini	60,000.00	St Pauls Taveta Mjini	9,000.00
Mivumoni	18,000.00	Taru	13,430.00
Mtopanga	129,406.00	Timbila	22,600.00
Mtwapa	70,000.00	Timbwani	30,250.00
Mwakiki	4,100.00	Tudor	75,000.00
Mwanda	8,100.00	Ukunda	158,220.00
Mwatate	35,500.00	Voi	17,350.00
Ndavaya	9,100.00	Wundanyi	5,200.00
Rabai Mazeras	10,100.00		2,079,050.00
Ramisi	16,300.00	INSTITUTIONS	
Sagalla	5,600.00	St Joseph Primary, Ukunda	20,310.00
Shanzu	71,340.00	St Joseph Heman Maxx Primary, Mtopanga	8,800.00
Shimba Hills	11,750.00		29,110.00
St Francis of Assisi - Customs	112,996.00		
St George Chaplaincy - Shimo LaTewa	5,200.00	GRAND TOTAL	4,187,210.00
		TO KCCB-CJPD	530,000.00

DIOCESE OF BUNGOMA

PARISH			
Akoreet	2,200.00	Chebukaka	100,000.00
Ang'orom	-	Chelelemuk	40,170.00
Amukura	91,526.00	Cheptais	50,500.00
Buhuyi	80,000.00	Chwele	60,000.00
Bukembe	50,000.00	Dahiro	70,000.00
Bulanda	100,000.00	Ganjala	30,000.00
Bumala	100,000.00	Kabula	62,180.00
Bumuturu	85,515.00	Kamukuywa	70,000.00
Bungoma	600,000.00	Kanduyi	300,000.00
Busia	276,750.00	Kaptalelio	48,000.00
Butula	144,730.00	Kibabii	400,000.00
Butunyi	70,000.00	Kibuk	70,000.00
Bwaliro	51,000.00	Kimatuni	60,000.00
Chakol	50,000.00	Kimwanga	80,000.00

Kimilili	400,550.00	Cardinal Otunga Girls High School	60,000.00
Kisoko	100,000.00	Mungeti Primary	3,000.00
Kocholia	50,000.00	Mungeti Secondary	6,250.00
Kongoli	83,000.00	Namuninge Primary	1,000.00
Kwangamor	70,000.00	Bukusu RC Primary	1,100.00
Lwanya	130,000.00	Kabubero Primary	1,400.00
Madende	100,000.00	Magnet Educational Centre, Netima	400.00
Magombe	140,000.00	St Kibabii Girls Primary	10,000.00
Malaba	71,250.00	St Jude Lumasa Primary	1,500.00
Maliki	71,000.00	St Anne Mukwa Secondary	800.00
Misikhu	270,000.00	Mukwa RC Primary	1,250.00
Mundika	200,000.00	Buema RC Primary	2,000.00
Myanga	50,500.00	St Pauls Miluki Primary	1,800.00
Naitiri	140,000.00	Mitua Friends (Ycs) Secondary, Ndal	3,125.00
Nalondo	30,000.00	St Peters Ndal High School	10,000.00
Nangina	105,000.00	St Mary's Bituyu Primary, Ndal	1,200.00
Ndal	165,000.00	St Charles Lwanga Sinoko Primary, Ndal	3,800.00
Port, Victoria	65,000.00	St Peter's Ndal Primary	5,000.00
Samoya	100,000.00	St Jacob's Kaliwa Secondary, Amukura	20,000.00
Sangalo	40,000.00	St Joseph's Amukura Primary	4,500.00
Sikusi	85,000.00	Apokor Special School, Amukura	1,600.00
Sio Port	72,630.00	St Monica Kumunuoit Primary	1,200.00
Sirimba	60,000.00	Kosera Primary, Amukura	1,000.00
Sirisia	70,000.00	St Pius Katelynyang, Amukura	1,000.00
Tongaren	180,000.00	Acunet Primary, Amukura	800.00
Webuye	240,000.00	St Luke Morukevari Amukura	1,000.00
SUB-TOTAL	6,231,501.00	St Michael Apatit, Amukura	3,000.00
INSTITUTIONS		St Elizabeth Okatekok Secondary	1,700.00
Catholic Diocese of Bungoma (Moyo Mt)	12,000.00	St Anthony Okatekok Primary	1,000.00
St Mary's Kibabii High School	70,000.00	Kamusing Primary, Amukura	500.00
Namikelo Primary	2,000.00	Apokor Primary	500.00
Sango Primary	1,600.00	St James Kamarinyang Primary	500.00

Misiri RC Primary, Chwele	1,500.00	Madola Primary	2,800.00
Nabeki RC Primary, Chwele	650.00	St Catherine Special School	2,450.00
Matibo RC Primary, Chwele	2,000.00	Kalalani Primary	2,150.00
St Mary's Buyofu Secondary	13,000.00	Bukati Primary	2,000.00
Sibembe Secondary	4,000.00	Mang'abo Primary	1,500.00
St Joseph's Buyofu Primary	3,060.00	Sikarira Primary	1,000.00
St Aquinas Madende Secondary	5,000.00	Siunga Primary	700.00
St James Madibo Secondary	1,500.00	Mung'abo Mixed Secondary	1,000.00
St Mary's Madibo Primary	1,100.00	Bukhuma Mixed Secondary	3,000.00
Rev Rent Joseph Ghana Academy	1,000.00	St Joseph's Boys Primary Sch, Butula	1,000.00
Musokoto Primary	1,000.00	St Mary's Buhuyi Secondary	6,015.00
St Peter Otiiri Primary	855.00	St Mary's Siribo Secondary	2,000.00
St Peter's Mwenge Primary	800.00	Tingolo Primary	1,000.00
St Alex Esidende Primary	1,350.00	Shirandala Primary	1,000.00
St Michael Madende Primary	2,000.00	St Pius Buhuyi Secondary	4,000.00
St John Sibembe Primary	2,000.00	Musibiriri Primary	550.00
St Mary Gorrette Buloma Primary	500.00	Musibiriri Secondary	1,000.00
St Paul's Elwanikha Primary	2,000.00	Isingo Primary	1,000.00
St Cecelia Girls Secondary, Misikhu	75,000.00	Siribo Primary	1,000.00
Sacred Heart Misikhu RC Primary	22,750.00	Bumala "B" Secondary	1,580.00
St John's RC Savana Mixed Secondary	1,550.00	Buhuyi Catholic Youth	6,970.00
Holy Family Primary, Misikhu	20,000.00	Nangina Deanery Youth	3,600.00
St Thomas Misikhu RC Secondary	4,500.00	Buhuyi Catholic Teachers	7,000.00
St Francis Makemo Girls Secondary	20,000.00	Little Sisters of St Francis	10,000.00
St John's Savana Primary	6,500.00	St Stephen's Sikusi Secondary	600.00
Makemo RC Primary	1,600.00	St Luke's Kimukung'i Primary	1,030.00
St Paul Kibisi RC Primary	2,000.00	St Kizito Mukhweya Primary	2,500.00
Sisters of Mary, Hostels Misikhu	35,000.00	St Joseph Sikusi Primary	4,250.00
Sisters of Mary, Misikhu Convent	4,000.00	St Sylvester Kisiwa Technical Institute	3,000.00
Beccam Academy, Misikhu	1,000.00	St Augustine Namakhele Primary	1,000.00
St Clare Butula Girls Secondary Sch	57,770.00	St Patrick Kimukung'i Girls Secondary	2,000.00
St Mary's Butula Girls Primary	11,200.00	Namilama(Deb) Primary	710.00
Masendebale Primary	4,000.00	Namilama Secondary	820.00

St Kizito Mukhweya Girls Secondary	610.00	St Charles Lwanga Secondary	2,200.00
Walukaya Primary (Deb) School	3,450.00	Mabanga RC Primary	1,000.00
St Consolata Kisiwa Primary	1,000.00	Nangili RC Primary	1,000.00
St Martin Depores, Kakichuma Primary	1,000.00	Luuya RC School	2,500.00
Chema Academy, Naitiri	20,000.00	Nasaka RC Primary	1,750.00
St Jude Napara Girls Secondary	23,500.00	Kiboochi RC Primary	2,000.00
Lelekwe Primary	2,000.00	St Joseph Bumutiru Secondary	12,000.00
St Stephen Kimaeti Primary	4,000.00	St Austine Kingandole Secondary	10,000.00
St Teresa of The Child Jesus, Kimaeti Novitiate	2,000.00	St Timothy Bumutiru Primary	2,500.00
Mutua RC Primary	2,500.00	St Simon Lunyiko Primary	2,000.00
St Stephen Chiliba Secondary	2,480.00	St Andrew Sikoma Primary	2,005.00
Victory Junior Academy, Bitobo	1,000.00	St Christopher Magombe Primary	4,000.00
St Joseph Bukirimo Secondary	5,500.00	St Melitus Saka Primary	2,500.00
Silobashine Primary	500.00	St Michael Musoma Primary	1,000.00
Bukirimo Primary	500.00	St Mathias Kingandole Primary	2,100.00
St Stephen Chiliba Primary	1,000.00	Links Primary Academy, Bumutiru	2,500.00
Denis Libolina Primary	2,800.00	St Cecelia Girls Sec. School, Nangina	70,000.00
St Monica Kamurumba Primary	2,000.00	Samia Girls Secondary	1,000.00
Sihilila Primary	1,745.00	Bujwang Secondary	8,600.00
Bishop Atundo Kimaeti High School	6,500.00	Busijo Secondary	5,000.00
St Antony Tulukuyi Secondary	5,000.00	Bujwang Primary	1,000.00
St Paul's Syombe Teachers Diploma College	2,500.00	Muramba Primary	2,000.00
Christ The King Cathedral Primary	112,115.00	Bumbe Tti	2,000.00
Bungoma Deb Primary	15,000.00	Chebukaka Girls Secondary	60,000.00
Fr Walstra Primary	30,000.00	St Mary's Bokoli Mixed Secondary	8,000.00
St Teresa Sio Primary	3,400.00	Sikimbilo RC Primary	1,900.00
St Teresa Sio Secondary	2,000.00	Cardinal Otunga Secondary	4,070.00
St Damiano Hospital	5,000.00	St Theresa Sichei Primary	1,000.00
Mother Kevin Primary	11,110.00	Our Lady of Assumption Khachonge Girls	2,500.00
St Christopher Mabanga Girls Secondary	11,000.00	St Peter's Mwiruti Secondary	10,000.00
Luuya Girls Secondary	11,750.00	St Mary's Mukhuma Primary	3,755.00
		St Anne's Wamumali Primary	1,500.00

St Theresa Kabula Primary	1,915.00	St Luke's Kimilili Boys High School, Kimilili	25,000.00
St Joseph Bulondo Primary	1,000.00	St Longinus Kongoli Secondary	6,560.00
St Paul Amukura Secondary	15,000.00	St Teresa Kakamwe	3,570.00
St Mark Bukiri Secondary	3,100.00	St Mary Narati	2,100.00
St Bridgit Namuduru Girls Secondary	1,600.00	St Anne Siangalamwe	1,000.00
St Clare Nanderema Girls Secondary	5,000.00	St Joseph Binyenya Secondary	1,550.00
St Michael Nambale Secondary	1,000.00	St Elizabeth Binyenya Primary	1,200.00
St Thomas Aquinas Boys Secondary	1,500.00	St John Karima Primary	2,000.00
St Patrick Nanderema Primary	1,000.00	Kibisi Primary	1,000.00
St Kizito Bukeko Primary	1,340.00	St John Karima High School	2,000.00
St Mathias Rumbiye Primary	1,000.00	Naitiri Boys High School	4,000.00
St Charles Lwanga Namuduru Primary	1,000.00	St John's Lutungu Secondary	4,000.00
St Francis of Asis Nabutuki Primary	700.00	St Anne Kongoli RC Primary	3,400.00
St Leah Bunandi Primary	1,000.00	St Mary Magdelene Khaweli Primary	3,000.00
St Mark Bukiri Primary	1,425.00	St Thomas Khalala Primary	1,000.00
St Michael Nambale Primary	500.00	St John's Lutungu Primary	800.00
St Anne's Royal Academy, Kimilili	1,830.00	Apostolic Carmel Covent, Kimwanga	5,000.00
St Theresa's Girls Sec, Kimilili	10,000.00	Musakasa Primary	3,000.00
St Monica RC Matili, Kimilili	1,000.00	Carmel View School, Kimwanga	10,000.00
Lady of Lodes RC Girls Primary, Kimilili	7,400.00	Mukuyuni RC Primary, Kimwanga	2,000.00
St Joseph's RC Boys Primary, Kimilili	15,120.00	Siboti RC Primary	1,050.00
St John's Primary Buko, Kimilili	3,500.00	St Jude Nabuyeywe RC Primary	1,400.00
St Theresa's Blessed Academy, Kimilili	1,000.00	Bunambobi RC Primary	3,500.00
Matili Tti, Kimilili	900.00	Masielo RC Primary	3,500.00
St Joseph's Kamusinde Sec, Kimilili	3,600.00	Kimwanga RC Primary	5,000.00
St Benedict Namboani Primary, Kimilili	1,350.00	Nangata RC Primary	1,000.00
Ycs Kamusinde Boys, Kimilili	8,000.00	Khasolo RC Primary	2,000.00
St Jan Secondary, Kimilili	2,200.00	Mayanja RC Primary	2,000.00
St John's Buko Secondary, Kimilili	4,050.00	Wacholi RC Primary	700.00
St Immaculate Kings Centre Academy, Kimilili	3,000.00	St Kizito Masielo Secondary	1,850.00
St Joseph's Kamusinde Primary, Kimilili	1,500.00	St Peter's Bwamani Primary	9,000.00
St Antony Matili Primary, Kimilili	2,500.00	St Andrew Bulanda Primary	22,220.00

St Peter Buyosi Secondary	10,000.00	St Teresa Sang'alo Primary	5,015.00
St Rose Mabale Primary	7,000.00	St Jude Luyekhe Primary	1,200.00
Bulanda Secondary	5,000.00	St Martin Mwibale Primary	1,000.00
St Michael Townshop Malaba Primary	5,000.00	St Mary Kamba Primary	700.00
Upper Town Preparatory, Malaba	1,000.00	St Elizabeth Chemululuchi Primary	500.00
St Anna Kajei Primary	1,150.00	St Martin Mwibale Secondary	10,150.00
St Monica Ekisegere Primary	1,000.00	St Kizito Busire Primary	5,000.00
S. Pius Ikapolok Primary	710.00	St Alexander Burinda Primary	3,000.00
St Gabriel Koruruma Primary	1,000.00	Holy Family Primary, Bukhwaku	6,050.00
St John Kajei Secondary	1,620.00	St Alois Buriya Secondary	2,700.00
St Mary Akiriamasit Primary	1,000.00	Immaculate Heart School, Bumala	3,200.00
St Teresa Secondary, Malaba	6,200.00	Straphael KMTC, Busia	3,900.00
St Monica Chakol Girls High School	60,000.00	St Teresa's Primary Busia	25,000.00
St Teresa Chakol Girls Primary	17,000.00	St Joseph's Girls Primary	32,000.00
Chakol Boys Primary	10,000.00	St Mary's Nursery, Busia	10,000.00
St Joseph's Chakol Secondary	12,500.00	Sisters of Mary Hostel, Busia	10,000.00
Otimong Primary	3,100.00	St Mathias Secondary, Busia	10,000.00
St Mary Goretty(Kmtc)	1,000.00	Cwa, Busia Parish	5,000.00
St Joseph's Eye Centre	3,000.00	Our Lady of Mercy Girls, Busia	10,000.00
St Angella Academy	12,000.00	St Mary's Boarding and Day Primary, Busia	10,000.00
St Monica Murumba RC Primary	3,000.00	St Teresa of Culcutta School	2,000.00
St Bridgid Lutaso Primary Webuye	5,015.00	Testimony Academy	3,000.00
St Mary's High School Webuye	32,300.00	St Monica Bukokholo Girls Secondary	17,295.00
Sijowa Primary	3,000.00	St Francis Xavier Sitabicha RC Primary	1,000.00
Wakhungu Primary	2,000.00	St Francis Xavier Bukokholo Teachers	1,100.00
Sichekhe Primary	1,000.00	St Barnabas Kuafu RC Primary	200.00
Bugwangali Primary	700.00	Sirisia Tvet Ycs	700.00
Wakhungu Secondary	1,000.00	St Anthony Sirisia Boys Secondary	8,175.00
Malanga Primary	500.00	Bwaliro Girls Secondary	3,000.00
Bukhulugu	1,000.00	Bwaliro Primary	1,000.00
Moody Awori Primary	4,000.00	Lukhari Primary	1,000.00
Nangina Polythecnic	1,000.00	Graceland Primary, Bwaliro	500.00
St Peter's Sang'alo Secondary	21,000.00		

St Catherine of Ciena, Kibabii University Catholic Chaplaincy	10,000.00	Holy Rosary Nangoma Primary	4,350.00
St Mary Immaculate Nambale Urban Secondary	20,000.00	St Theresa Nambere Primary	3,550.00
Mabunge RC Secondary	1,000.00	Matayos Polytechnic	500.00
St Mary's Nambale Secondary	3,000.00	St Kizito Murende Secondary	3,000.00
St Charles Lwnaga Emukhuyu Secondary	2,000.00	St John Muyafwa Primary	3,015.00
St Augustine Nasira Secondary	7,200.00	Sisenye RC Primary	2,200.00
St Joseph Segero Secondary	720.00	St Jude Budalang'i Primary	4,000.00
St Mathew Lwanyange Secondary	3,100.00	Bukoma RC Primary	4,000.00
St Mariagorret Girls Primary	7,010.00	Lunyofu RC Primary	2,400.00
St Mary Nambale Primary	2,000.00	St Cecelia RC Primary	3,000.00
St Peter's Nasira Primary	2,000.00	St Nicholas RC Primary	3,000.00
St Joseph Kisoko Boys Primary	4,500.00	Lake Breeeze Academy	1,000.00
St Peter's Sunshine Academy Primary	2,000.00	St Benedict Budalang'i Secondary	4,200.00
St Francis Segero Primary	5,690.00	St Paul, John Osogo High School	5,000.00
St Agnes Manyole Primary	2,000.00	Bukoma Seconadry School	2,600.00
St Mathew Lwanyange Primary	1,500.00	St Michael Sisenye High School	3,585.00
St Agatha Kajoro Primary	1,000.00	St Teresa Mundere Girls	1,000.00
Little Angel Academy (Mabunge)	500.00	St Cecelia Namenya Girls Secondary	3,000.00
Emukhuyu Primary	1,000.00	Bunyala Technical	1,350.00
St Mary Assumpta Mabunge Primary	2,000.00	Fr Okodoi Secondary	18,890.00
St Teresa Busidibo Primary	5,200.00	Akites Primary	5,500.00
St Martin Kisoko Special School	2,000.00	Okiporo Primary	1,255.00
St Joseph's Busidibu Special School	1,200.00	Apegei Primary	1,100.00
St Longinus Maira Primary	5,500.00	St Anne's Sirare Primary	550.00
St Benedict Academy	3,000.00	St Joseph Nalondo Boys Secondary	3,000.00
St Stephen Lwanya Girls Secondary	8,000.00	St Joseph Nalondo Girls Secondary	8,000.00
St Scolastic Lwanya Primary	5,100.00	St Joseph Nalondo Primary	2,200.00
St Eugene Primary, Lwanya	2,300.00	St Mary's Kibuk Girls Secondary	25,000.00
St John Muyafwa Secondary	1,300.00	St Agnes Lapkei Primary	9,000.00
St Peter Igero Primary	7,000.00	St John Chepyuk Secondary	4,500.00
St Abraham Lulita Primary	1,700.00	St Teresa Cheptoror Secondary	3,000.00
		St Peter's Cheptonon Secondary	1,600.00
		St Teresa's Tendet Primary	2,000.00

St Peter's Kibuk Primary	2,000.00	Akudiet Primary	830.00
St Joseph's Chebich Primary	1,000.00	St Bakhita Preparatory, Kocholia	600.00
St Peter's Cheptonon Primary	1,000.00	Bishop Norman King'oo Secondary	1,260.00
St Martin Chepyuk Primary	900.00	St Clare Kocholia High	1,300.00
St Monica Akobwait Primary	1,000.00	St Joseph Kocholia Secondary	8,020.00
Bright School Academy, Akobwait	1,000.00	St Mary's Mukhuma Secondary	10,000.00
Chief Alexanda Papa Primary	1,000.00	St Teresa Kabula Secondary	12,000.00
St Patrick's Kwangamor Primary	2,400.00	St Elizabeth Malinda Primary	1,500.00
St Peter's Kotur Primary	500.00	St Joseph Remwa Primary	1,000.00
St Paul Igara Primary	800.00	St Michael Bukumuma Primary	400.00
Lupida Primary	1,000.00	St Anne's Bunyala Girls Secondary	75,000.00
Dulienge Primary	1,000.00	Busagwa Primary	3,000.00
Okisimo Primary	500.00	Mundika 'B' Primary	2,000.00
St John Akobwait Secondary	1,470.00	Mubwayo Primary	3,020.00
St Paul Igara Secondary	4,000.00	Mukhobolo Primary	3,000.00
St Peter Kotur Secondary	1,050.00	Makunda Primary	500.00
St Francis Lupida Secondary	2,500.00	Bubamba Primary	800.00
St James Kwangamor Secondary	30,000.00	Budalo Primary	1,500.00
Chesito Secondary	3,000.00	St Benedict Academy Magombe	2,000.00
Kaptalelio RC Primary	2,150.00	Busagwa Polytechnic	2,000.00
St Benedict Kongit Primary	1,100.00	Kabukui Primary	800.00
St Francis Kongit Secondary	2,400.00	Ketebat Primary	1,100.00
St Susan Chemeses Primary	1,000.00	Kakameri Primary	600.00
Chelilde Primary	520.00	Kolait Girls Primary	1,500.00
Kaptalelio Girls Secondary	5,000.00	St Antony Akobwait Secondary	500.00
Bishop Atundo High School, Mabusi	24,000.00	St Martin Mwari Secondary	1,050.00
Pag Nyange Secondary	9,000.00	St Elizabeth Kabukui Secondary	1,500.00
St Augustine Girls Lukhuna Secondary	5,000.00	Bishop Sulumeti Girls Secondary	5,200.00
St Peter's Chemwa Primary	1,600.00	St Bernard Kakurikit Secondary	5,500.00
Chebukwa Deb Primary	2,500.00	St Peter's Buriangi RC	16,500.00
Sacred Heart Wamalwa Kijana High	9,950.00	St Gabriel Mundika Girls' RC	12,055.00
Khalaba Primary	1,915.00	Davisan School Lwero	3,500.00
St Paul Parochial School, Kanduyi	1,650.00	Our Lady of Grace & Compassion	3,650.00

St Mary's Siwongo RC	3,330.00	St Augustine Boys Secondary	23,000.00
St Stephen Bugeng'i	2,815.00	John Bosco Primary, Butunyi	3,500.00
St Teresa Bugeng'i M.h Special	2,750.00	St Lazarus Ikonzo Primary	5,050.00
Mundika H.i Special School	2,440.00	St Thomas Namwitsula Primary	1,215.00
St Jude Mundika Boys RC	1,870.00	St Monica Secondary, Butunyi	2,000.00
St Benedict Busabakhwa RC	1,770.00	Ikonzo Secondary, Butunyi	3,650.00
St John Buringala RC	1,300.00	Khunyangu Primary, Butunyi	4,400.00
St Paul Mujuru RC	1,000.00	Namwitsula Secondary	570.00
Esikulu RC	1,000.00		2,458,500.00
St Mary's Mundika High	3,000.00	TOTAL	8,669,781.00
St Patrick's Busibwabo Secondary	3,000.00	TO KCCB, CYPD	2,200,000.00

DIocese of Eldoret

PARISH

CHESONGOCH DEANERY

Arror	-
Chesoi	29,650.00
Chesongoch	-
Endo	-
Mogil	-
Embobut	10,000.00
Kapyego	24,700.00

SUB-TOTAL 79,350.00

NERKWO DEANERY

Chebororwa	-
Koibarak	-
Kapcherop	30,770.00
Mosop	10,090.00
Kapsowar	20,700.00
Nerkwo	20,000.00

SUB-TOTAL 96,560.00

ITEN DEANERY

Iten	133,780.00
------	------------

Kamwosor	33,765.00
----------	-----------

Kabulwa	-
---------	---

Koptega	11,200.00
---------	-----------

Mokwo	23,460.00
-------	-----------

Tambach	15,000.00
---------	-----------

Kobuliot	30,600.00
----------	-----------

Chelingwa	-
-----------	---

Holy Rosary Chaplaincy, Singore	15,000.00
---------------------------------	-----------

Emsea	-
-------	---

Kabechei	2,500.00
----------	----------

SUB-TOTAL 265,305.00

=-	-
----	---

Kapkemich Parish	-
------------------	---

Lelwak Parish	23,000.00
---------------	-----------

Samutet Parish	16,000.00
----------------	-----------

Kapkenduiwo	20,000.00
-------------	-----------

Kipsebwo	20,000.00
----------	-----------

Chemase	7,300.00
---------	----------

Kobujoi	20,000.00
---------	-----------

Nandi Hills	80,000.00	Cheptiret	8,205.00
O'llessos	-	Cheplasgei	25,550.00
Kapnyeberai	23,100.00	Langas	-
Tachasis	25,000.00	Boarderland	19,070.00
Kapkeno	8,350.00	Moi University	30,000.00
SUB-TOTAL	242,750.00	Kapteldon	-
CHEPTERIT DEANERY		Timboroa	9,300.00
Cheptarit	52,000.00	Yamumbi	41,920.00
Chemuswa	21,000.00	SUB-TOTAL	203,555.00
Kapsabet	126,867.00	MAJENGO DEANERY	
Chepterit	65,700.00	Huruma	142,263.00
Baraton	30,000.00	Majengo	230,000.00
Kipngeru	-	Matunda	70,300.00
Tindinyo	10,000.00	Turbo	20,000.00
Namgoi	31,000.00	Osorongai	22,600.00
Ndubeneti	-	Ziwa	-
Tiryo	15,000.00	Sambut	61,550.00
SUB-TOTAL	351,567.00	Soy	21,960.00
KAIBOI DEANERY		Moi's Bridge	78,900.00
Kaiboi	22,000.00	Kapyemit	46,830.00
Sangalo	-	SUB-TOTAL	694,403.00
Kabiyet	15,050.00	CATHEDRAL DEANERY	
Kapsisiywo	-	Sacred Heart Cathedral	394,000.00
Chemnoet	20,350.00	Kapsoya	250,000.00
Chepterwai	19,100.00	Kaptagat	30,000.00
Chepkatet	22,000.00	Chepkanga	-
Salient	5,000.00	Naiberi	22,400.00
Ndalat	5,500.00	Waunifer	17,460.00
SUB-TOTAL	109,000.00	Kimumu	60,000.00
SEMINARY DEANERY		Kaptuli	50,000.00
John 23rd	26,200.00	Moiben	16,950.00
Pastoral Centre Chaplaincy	30,310.00	Meibeki	21,000.00
Burnt Forest	13,000.00	Tembelio	8,000.00

Eldoret Prison	6,200.00	Ancilla Boarding/Day Academy, Outspan	30,000.00
Wellwisher	2,000.00	St Teresa of the Child Jesus, Moi's Bridge	665.00
	878,010.00		
SCHOOLS			
Loreto Convent Girls Secondary	4,500.00	Kimuron Secondary	16,800.00
Immaculate Heart Juniorate	5,000.00	St Jude Academy, Belioimo	10,000.00
Kaptagat Girls Secondary	31,540.00	St Patrick High, Iten	15,000.00
Apostolic Carmel Primary	32,090.00	Kombe Secondary	27,000.00
Loreto High, Matunda	20,670.00	Kapsowar Boys	3,400.00
Our Lady of Assumption Academy, Majengo	9,180.00	Kapsowar Girls	5,400.00
St Teresa Primary, Moi's Bridge	1,000.00	Holy Family Mission School, Kapsowar	10,000.00
St Francis Primary / Junior Secondary Kilima, Moi's Bridge	3,545.00	St Joseph Secondary	15,600.00
St Stephen Secondary Jabali, Moi's Bridge	500.00		241,890.00
		GRAND TOTAL	4,040,400.00
		TO KCCB-CJPD	1,611,537.00

DIocese of Embu

PARISH

St Joseph Mukasa, Mbiruri	486,795.00	St Paul's, Makima	63,000.00
Our Lady Of Assumption, Embu	447,280.00	Holy Trinity, Gwakaithi	54,540.00
St Francis Xavier, Siakago	333,715.00	St Anthony of Padua, Mutuobare	52,500.00
Sacred Heart, Kyeni	244,080.00	Christ The King, Kathunguri	50,000.00
St Francis Of Assisi, Nthagaiya	203,910.00	St Thomas More, Kairuri	50,000.00
St Joseph, Kianjokoma	203,780.00	Our Lady Of Consolata, Iriamurai	47,830.00
St Teresa's, Kithimu	188,878.00	St Lawrence, Munyori	20,150.00
Holy Family ,Nguviu	176,000.00	St John The Baptist ,Kirie	5,300.00
Mary Mother of God, Karurumo	168,185.00		SUB-TOTAL
Ss. Peter & Paul Cathedral	165,855.00		3,528,903.00
Sacred Heart, Karaba Wango	153,000.00	INSTITUTIONS	
St Paul's, Kevote	126,200.00	St Augustine's TTC	10,800.00
St Mary's, Makutano	120,000.00	Our Lady of Assumption School	6,000.00
St Benedict, Karau	103,940.00	Our Lady of Assumption Clergy	10,000.00
Good Shepherd ,Ishiara	63,965.00	University Of Embu	16,000.00
		Embu College	3,600.00

Embu Prisons	5,000.00	Rukira Primary, Kithimu	1,665.00
Sacred Heart Kyeni Girls H. School	50,000.00	Rukira Secondary, Kithimu	390.00
Sacred Heart Kyeni Boarding Primary	8,600.00	Nembure Primary, Kithimu	4,000.00
St Luke Primary, Kyeni	1,430.00	Nembure Polytechnical, Kithimu	115.00
Rukuriri Primary	2,075.00	Nembure Junior Star, Kithimu	1,000.00
St Mary's Parochial Primary	2,915.00	Pmc Ngenge Prayer House, Kithimu	410.00
S.A Secondary, Kyeni	3,080.00	Manyatta Tvet	710.00
Njeruri Primary	1,230.00	Mbukori Primary, Kithimu	605.00
Felician Sisters, Kyeni	2,000.00	M'tetu Secondary, Kithimu	1,400.00
Kivuria Primary Teachers	1,400.00	St Christopher Secondary, Kithimu	500.00
St Anthony Kivuria Secondary	600.00	St Protasius School, Kithimu	775.00
Maria Goretti Girls Rukuriri	8,500.00	Kithimu School	3,100.00
St Agnes Kiaganari Secondary	625.00	St Andrew's School, Kithimu	5,200.00
Kiaganari Primary	2,780.00	Mother Angeline School, Kithimu	1,345.00
Fidenza School Of Nursing	450.00	St Benedict School, Kithimu	2,480.00
Consolata Hospital, Kyeni	12,010.00	Ithangawe School, Kithimu	2,000.00
Kathunguri Secondary, YCS	1,789.00	St Paul High School, Kevote	283,950.00
Kiambungu Primary, Ishiara	300.00	St Paul High School, Kevote (Students)	7,115.00
St Timothy Kianjeru Secondary, Ishiara	3,400.00	St Paul High School, Kevote (Principal)	2,000.00
St Thomas Kigwambiti Secondary, Ishiara	700.00	St Paul High School, Kevote (Deputy Principal)	1,000.00
Holy Trinity Monastery, Ishiara	5,000.00	Consolata Girls, Kevote	8,610.00
St Thomas Fasce, Ishiara	10,530.00	Ngoire Secondary, Kevote	14,055.00
St Kizito Kathangari Primary, Ishiara	4,115.00	St Michael Secondary, Kevote	10,500.00
St Michael Kyenire Secondary Ishiara	2,845.00	St Joseph of Tarbes Schools, Kevote	9,200.00
Kigwambiti Secondary, Ishiara	2,300.00	Kiandari Primary, Kevote	7,100.00
St Peter Upper School, Ishiara	7,000.00	Kianjuki Primary, Kevote	1,300.00
St Mary Nthabari Primary	2,240.00	St Michael Primary School, Kevote	6,890.00
St Stephen Mang'ote School, Ishiara	1,000.00	Parochial Primary, Kevote	1,505.00
St Benedict Kamukanya Primary, Ishiara	250.00	St Catherine Keruri Primary, Kevote	4,515.00
St Monica Girls Secondary	53,280.00	Consolata Primary, Kevote	3,160.00
Bl. Allamano Ndatu School, Kithimu	1,500.00	Ngoire Primary, Kevote	1,460.00
Victory Academy, Kithimu	705.00		

St Marks Karue Primary, Kevote	2,023.00	Kamweli Primary, Makutano	2,100.00
St Phillips Makengi Primary	2,750.00	Makawani Primary, Makutano	2,000.00
St Paul Kevote Parish Clergy	5,000.00		652,957.00
St Joseph Allamano Wachoro Boys, Makutano	3,775.00	GRAND TOTAL	4,381,860.00
Wakalya Primary, Makutano	1,205.00	TO KCCB-CJPD	950,000.00

DIocese of GARISSA

PARISH			
Our Lady of Consolation Cathedral	115,340.00	Sacred Heart Of Jesus Emmaus	9,600.00
St Paul, Hagadera	22,000.00	Wajir	14,250.00
St Kizito Scc, Dadaab	17,000.00	Wenje	3,150.00
St Jude, Bura	57,100.00	GRAND TOTAL	284,340.00
Hola	30,000.00	TO KCCB-CJPD	94,400.00
Mandera	15,900.00		

DIocese of HOMA BAY

PARISH/INSTITUTION			
ASUMBI DEANARY		RAPOGI DEANARY	
Achego Uganda Martyrs Parish	46,500.00	Awendo St Paul of the Cross Parish	75,000.00
Asumbi St Theresa's Parish	99,415.00	Dede St Anne's Parish	60,000.00
Homabay St Paul Parish	66,210.00	Rakwaro Our Lady of Fatima Parish	38,130.00
Nyalienga St Arnold Parish	12,000.00	Rapogi St Monica Parish	60,000.00
Rodi St Camillus De Lellis	29,750.00	Rongo Emmaus Parish	61,500.00
Wandiji St Andrew Parish	21,334.00	Uriri St Mary's Parish	97,500.00
Orego Primary, Asumbi	510.00	Ulanda St Martin De Porres Parish	58,500.00
Asumbi Girls National School	50,000.00	St John's Minor Seminary, Rakwaro	10,000.00
Orero High, Asumbi	5,350.00	St Albert's Girls' High School, Ulanda	149,000.00
Asumbi TTC	3,400.00	St Linus Koyieko Secondary, Uriri	3,700.00
St Josephine Bakhati	42,000.00	St Peter's Uriri Primay Sch	3,000.00
St Theresa's Educational Complex	6,505.00	St Joseph's Kolwal Primary, Uriri	3,000.00
SUB-TOTAL	382,974.00	St Francis Ng'ong'a Primary, Uriri	2,100.00

St Victor Nyayakoch Primary, Uriri	1,200.00	St Francis Nyaganjo Girls School, Kendu Bay	10,000.00
St Michael Kamuga Primary, Uriri	1,000.00	St Mary's Primaryool, Ringa	5,000.00
St Mary's Elsy Amsler Primary, Uriri	1,000.00	SUB-TOTAL	326,265.00
St Joseph's Nyamilu Primary, Uriri	1,000.00	KADEM DEANARY	
St Mary Kagito Primary, Uriri	600.00	Kadem St Michael Parish	17,600.00
St Timon Rabondo High, Dede	5,000.00	Macalder Martyrs of Uganda Parish	13,500.00
SUB-TOTAL	631,230.00	Migori St Joseph Parish	102,270.00
ISIBANIA DEANARY		Muhuru Bay Parish	19,440.00
Isibania St Thomas More & John Fisher	37,500.00	Oruba St Celestino Parish	91,035.00
Kebaroti St Charles Lwanga Parish	11,970.00	Osogo Holy Spirit Parish	15,000.00
Kegonga St Mathias Mulumba Parish	7,500.00	Benedict Parochial Primary	20,305.00
Kehancha Our Lady Queen of Martyrs Parish	30,300.00	St Gemma Girls, Macalder	5,000.00
Mabera St Mary's Parish	39,600.00	St Gabriel's Primary, Macalder	7,500.00
Masaba St James Parish	14,858.00	St Joseph Mission Hospital	33,350.00
Ntitaru St Peter and Paul Parish	15,000.00	SUB-TOTAL	325,000.00
Nyamaharaga Immaculate Heart Parish	22,500.00	MIROGI DEANARY	
Catechist, Mabera Parish	1,900.00	Ang'ya Sacred Heart Parish	31,500.00
St Mary's Mabera Girls School	1,600.00	Karungu St Gabirel Our Lady of Sorrows Parish	169,500.00
St Mathias Nyamosense, Mabera	1,000.00	Mirogi St John Mary Vianney	30,000.00
Nyamekoma Primary, Mabera	390.00	Ndhiwa Holy Family Parish	25,500.00
SUB-TOTAL	184,118.00	Nyarongi St Mary's Parish	63,525.00
MAWEGO DEANARY		St Paul's Nyamanga Mixed School	7,000.00
Anding'o Our Lady Queen of Peace Parish	22,500.00	Ndhiwa Township Primary	2,100.00
Kendu Bay Our Lady of Immaculate Con Parish	31,515.00	St Vincent School, Ndhiwa	2,000.00
Mawego St Francis of Assisi Parish	30,000.00	Magina Girls Secondary, Angiya	4,500.00
Oriang Blessed Sacrament Parish	24,300.00	Ototo Secondary, Angiya	690.00
Oyugis St Peter's Parish	165,000.00	St Philip Wayaga Secondary, Angiya	5,940.00
Raruowa St Bernadette Parish	22,800.00	SUB-TOTAL	342,255.00
Ringa St Mary's Parish	15,150.00	TONGA DEANARY	
		Kakrigu St Theresa's Parish	14,656.00
		Mbita Star of the Sea Parish	63,000.00

Mfangano St Linus Parish	15,555.00	Tonga St Joseph Parish	15,375.00
Nyandiwa St John The Evangelist Parish	34,500.00	Nyandiwa Secondary	2,300.00
Nyamasare St Joseph's Parish	37,010.00	Obanga Secondary	4,000.00
Nyagwethe St Francis of Assisi Parish	19,510.00		216,181.00
Sindo Christ the Good Shepherd Parish	10,275.00	GRAND TOTAL	2,408,023.00
		TO KCCB-CJPD	656,970.00

DIOCESE OF ISIOLO

PARISH / MISSION / INSTITUTION		CAMP GARBA CATHOLIC MISSION	
Bulesa Catholic Mission	700.00	St Antioco Camp Garba Centre	18,053.00
Ngaremara Catholic Mission	2,700.00	Moyo Safi Wa Maria (Game)	6,520.00
Garbatulla Catholic Mission	4,800.00	Moyo Mtakatifu Wa Yesu (Shambani)	5,400.00
St Charles Lwanga Catholic Mission	11,525.00	Watakatifu Peter Na Paulo (Kiwanja)	3,860.00
Kinna Catholic Mission	6,000.00	Maria Consolata (Masharkwata)	1,800.00
Kipsing Catholic Mission	9,300.00	Yohane Mbatizaji (Lotiki)	1,100.00
Leparua Catholic Mission	3,200.00	Nomads Primary	9,000.00
Catholic Diocese of Isiolo Secretariat	4,000.00	Nomads Nursery	1,350.00
Merti Catholic Mission	7,551.00	Shambani Primary	2,450.00
Oldonyiro Catholic Mission	20,168.00	Shambani Nursery	650.00
Our Lady of Assumption Mission, Kambi Ya Juu	18,000.00	Emejan Primary	950.00
Chechelesi Catholic Mission	37,880.00	Emejan Nursery	250.00
St Francis Xavier Catholic Mission	3,000.00	Kiwanja Primary	1,285.00
SUB-TOTAL	128,824.00	Kiwanja Nursery	250.00
ST EUSEBIUS CATHEDRAL PARISH		Workshop	1,400.00
St Eusebius Cathedral	45,085.00	Dispensary	800.00
Blessed Allamano Mwangaza Prayer House	12,660.00	Missionaries Of Charity Brothers	4,000.00
St Joseph Prisons Prayer House	19,900.00	Consolata Missionaries	4,000.00
Christ The King Kariene Prayer House	12,230.00	SUB-TOTAL	63,118.00
SUB-TOTAL	89,875.00	GRAND TOTAL	281,817.00
		TO KCCB-CJPD	120,000.00

DIOCESE OF KAKAMEGA

PARISH

St Peter's Mumias	406,000.00	St Mathias Mulumba Matunda	68,000.00
St Joseph's Cathedral Kakamega	405,000.00	Our Lady of Assumption Mautuma	67,850.00
St Pius X Musoli	302,106.00	St Philip's Mukomari	65,000.00
The Sacred Heart of Jesus Mukumu	300,000.00	Our Lady of Assumption Indangalasia	63,000.00
Christ The King Amalemba	260,000.00	Corpus Christi Irenji	62,300.00
St Ursula's Chamakanga	250,000.00	Holy Cross Emalindi	61,700.00
Holy Spirit Bulimbo	248,442.00	Our Lady of Consolata Bukaya	58,320.00
St Joseph The Worker Shibuye	220,600.00	Our Lady of Fatima Buyangu	50,000.00
Our Lady of The Nativity Mutoma	206,000.00	St Mary's Lwanda	47,560.00
St Kizito Lusumu	190,000.00	St Agnes Mukulusu	46,220.00
St Paul's Ejinja	154,975.00	Holy Trinity Soy	45,156.00
St Luke's Bumini	150,000.00	Immaculate Heart of Mary Marukusi	43,000.00
All Holy Angels In Heaven Lutonyi	142,408.00	St Joseph's Shirotsa	40,000.00
St Theresa's Malava	122,053.00	St Patrick's Lufumbo	33,945.00
Our Lady of The Assumption Shitoli	110,000.00	SUB-TOTAL	5,800,331.00
St Augustine's Eregi	110,000.00	PRIMARY SCHOOLS	
St Anne's Eshisiru	110,000.00	CHEKALINI DEANERY	
St John The Baptist Likuyani	110,000.00	Chetambe	2,600.00
St Charles Lwanga Hambale	107,000.00	Mayoyo Mhm	3,000.00
St Mark's Nzoia	104,000.00	Koromaiti	2,500.00
Holy Family Lubao	102,666.00	Lugari	1,000.00
St Francis Xavier Shikoti	100,000.00	Musembe	500.00
Holy Cross Muranda	100,000.00	Baharini	2,000.00
Our Lady of The Holy Rosary Shiseso	92,650.00	Mapengo	1,000.00
St Charles Lwanga Chekalini	90,000.00	St Marys Mutenyo	3,000.00
Our Lady of The Immaculate Conception Chimoi	85,000.00	St Peters Mautuma	3,000.00
Our Lady Queen of Peace Lumakanda	85,000.00	St Peters Moi's Bridge	2,500.00
St Charles Lwanga Lung'anyiro	84,916.00	Mary Immaculate Chimoi	6,850.00
St Joseph's Kongoni	82,464.00	St Luke's Binyenya	2,270.00
St Caroli Lwanga Lutaso	76,000.00	St Mark's Mission School	3,000.00
St Joseph's Luanda	72,000.00	St Stephen's	4,550.00
St Paul's Erusui	69,000.00	St Leo The Great	1,120.00
		Beatrice Telewa Memorial	1,000.00

St Louis Mautuma	2,000.00	St John's Mahiakalo	8,300.00
St Mukasa Chimoi	3,100.00	St Philip's Mukomari	1,000.00
St James Makuche	1,070.00	St Joseph Academy	7,000.00
St Charles Lwanga Mukhalanya	780.00	Shikoti Girls	2,500.00
St Paul's Mutua	1,000.00	St Vincent Hirumbi	2,000.00
St Don Bosco	2,000.00	Ebushibo	1,500.00
St Teresa Matunda	3,150.00	Shibuche	1,000.00
EREGI DEANERY		MUKUMU DEANERY	
Lwanaswa	1,035.00	St Mary's Mukumu Girls	93,050.00
Eregi Girls	5,000.00	St Clare's Musoli Girls	11,000.00
Homunoywa	3,000.00	St Ambrose Malinya	7,000.00
St Nicholas Ebukhuliti	3,000.00	Mukoyani	1,400.00
St Francis Hambale	55,000.00	St Mary's Shibuye Girls	5,000.00
St Joseph Shirotsa	3,150.00	St Thomas Musoli	2,180.00
St Emmelian Special	1,000.00	St Albert Shanjero	3,000.00
Ebukuya	2,500.00	Shamusingiri	3,200.00
St John's Mukhunzulu	2,000.00	Shitoli	5,425.00
St Paul Mwirembe	1,500.00	Holy Innocent Parochial Shitoli	3,620.00
Holy Cross Emalindi	2,000.00	Shikondi	2,100.00
St Dennis Munjiti	1,500.00	St Kizito Shisele	400.00
St Benedict Eshilongo	3,000.00	Shinyikha	2,500.00
KAKAMEGA DEANERY		St Francis Preparatory	1,000.00
St Paul's Emulakha	1,500.00	St Paul And Junior Secondary	1,000.00
St Gerald Shitaho	1,200.00	St Mary Shichinji	3,000.00
St Lawrence Ichina	2,050.00	St Michael Shibunname	500.00
Shikoti Mixed	3,500.00	Shiseno	2,000.00
St Basil Lurambi	1,395.00	St Augustine's Ecde Mukumu	1,000.00
St Agnes Ikonyero	2,400.00	St Augustine's Mukumu Boys	12,000.00
St Caroli Lwanga Maraba	3,000.00	Shipalo	1,500.00
St Teresa Musaa	2,000.00	MUMIAS DEANERY	
St Peter's Ebuhayi	1,000.00	Mwitoti	18,000.00
Ingolomosio	1,500.00	Mayoni Township	5,000.00
Albertos Divine Providence	10,000.00	St Christopher Enyapora	6,000.00
St Andrew Kaggwa Eshisiru	2,000.00	St Martin Mumias For Deaf	3,000.00
Shivakala	3,000.00	Lunganyiro	2,000.00

Etenje	1,000.00	St Bakhita Ebusiratsi Girls	16,660.00
Utende	2,500.00	St Francis of Assis Kaptik	11,100.00
St Peter's Mumias	38,000.00	St Fracis Xavier Imalaba	7,000.00
St Angela Bulimbo	4,000.00	St Ursula Chamakanga	6,100.00
Mukoye	2,000.00	St Joseph's Shirotsa	5,680.00
Lusumu	1,000.00	St Claire Ebukuya Special Sec	4,100.00
St Anne's Mumias	40,250.00	St Peter's Erusui Mixed	3,500.00
SUB-TOTAL	479,145.00	St Anne's Buyangu	2,500.00
SECONDARY SCHOOLS		KAKAMEGA DEANARY	
CHEKALINI DEANARY		Bishop Sulumeti Girls Kakamega	110,000.00
Bishop Sulumeti Girls Lugari	68,640.00	St Patrick's Ikonyero	30,000.00
Archbishop Njenga Girls	57,900.00	St Monica Lubao	25,000.00
Holy Family Musembe	35,000.00	St Anthony Kakoyi	10,340.00
St Anne's Nzoia	35,000.00	St Joseph's Girls Kakamega	8,000.00
St Joseph's Kogo	30,000.00	St Patrick's Bukhakunga	6,000.00
Holy Family Marukusi	20,000.00	St Phillip's Mukomari	5,000.00
St Elizabeth Likuyani Girls	17,300.00	St Thomas Aquinas Eshisiru	4,360.00
St Mukasa Girls	16,000.00	St Joseph's Ingolomoso	4,225.00
St Stephen's Lwanda	11,000.00	St Mary Shihome	3,500.00
St Teresa Mukunga	10,000.00	St Carol Lwanga Maraba	3,200.00
St John The Baptist Likuyani Boys	8,200.00	St Francis Xavier Shikoti Mixed	3,200.00
St Charles Lwanga Koromait	7,000.00	St John's Shinoyi	3,000.00
St Benedicts Lugulu	6,800.00	St Paul's Emulakha	2,400.00
St Peter's Moi's Bridge Girls	5,450.00	MUKUMU DEANARY	
St Joseph's Lumino	5,000.00	St Anne's Musoli Girls	102,300.00
St Veronica Mirembe	5,000.00	Sacred Heart Mukumu Girls	80,000.00
St Francis Kisigame	4,400.00	St Agnes Shibuye	50,000.00
St Michael Kilimani	3,500.00	St Ignatius Mukumu Boys	35,000.00
Holy Cross Sango Girls	3,000.00	St Peter's Seminary	31,000.00
St Henry Saisi Wabuge Girls	3,000.00	St Josephs Shichinji	11,000.00
St Joseph Nyarotis	2,300.00	St Cecilia Lufumbo	10,000.00
St Augustine Mlimani	2,110.00	St Charles Lwanga Mukumu	7,400.00
EREGI DEANARY		St Gerald's Shianjero	6,795.00
St Theresa's Eregi Girls	150,000.00	St Bonventure Shimanyiro	5,100.00
St Paul's Erusui Girls	63,800.00	Our Lady Queen of Peace Shikondi	4,500.00

Our Lady of Assumption Shitoli	4,100.00	St Joseph Shibinga 'W'	9,600.00
Fr Joseph Ortiner Girls	4,000.00	St Bedas Bukaya	7,950.00
St John's Museno	4,000.00	St Joseph's Indangalasia	7,000.00
St Joseph Malimili	2,430.00	St Romano's Matawa	5,005.00
Friends School Mugomari	2,000.00	Our Lady of Nativity Mutoma	5,000.00
St Anne's Munasio	1,550.00	St Agnes Mwira Girls	5,000.00
St Cecilia Shihumbu	700.00	St Thomas Aquinas Buchangu	4,750.00
MUMIAS DEANARY		St Charles Khalaba	4,000.00
St Mary's Mumias Girls	277,200.00	St Benedict Mukoye Girls	4,000.00
St Peter's Mumias	120,000.00	St Teresa Eshisenye	3,510.00
Mary Seat of Wisdom Bulimbo Girls	83,000.00	St Gabriel Isongo	2,700.00
St Teresa's Itete	40,000.00	St Elizabeth Bumia Girls	2,500.00
St Angela Deaf School	20,000.00	St Francis Shiyabo	2,500.00
St Elizabeth Lureko Girls	15,800.00	St Joseph's Lukongo	2,500.00
St Mathias Kholera	13,500.00	St Barnaba's Shinamwenyuli	1,270.00
St Christopher Enyapora	12,555.00	SUB-TOTAL	1,878,765.00
St Maurice Mwira	12,000.00	GRAND TOTAL	8,158,241.00
St Charles Lung'anyiro	10,285.00	TO KCCB-CJPD	3,100,000.00

DIOCESE OF KERICHO

PARISH / INSTITUTION			
Bomet	30,200.00	Kapkilaibei	7,260.00
Chebangang	14,500.00	Kaplomboi	19,245.00
Chebole	10,000.00	Kaplong	134,960.00
Chebunyo	8,000.00	Kapsang'aru	14,890.00
Chemelet	25,000.00	Kapsigiryo	5,000.00
Chepseon	12,450.00	Kebeneti	34,295.00
Embomos	14,300.00	Keongo	-
Fort-Ternan	12,870.00	Kimatisio	22,810.00
Girimori	10,000.00	Kimugul	23,050.00
Kabianga	18,000.00	Kipchimchim	120,000.00
Kaboloin	10,000.00	Kipkelion	17,500.00
Kapkatet	6,000.00	Kiptere	51,190.00

Kobel	14,600.00	Queen of Angels Primary	333.00
Koiyet	32,165.00	Kaplong Girls High	31,830.00
Litein	26,600.00	Kaplong Boys High	2,000.00
Londiani	30,000.00	St Clare's Kaplong School of Nursing	1,090.00
Longisa	13,000.00	Ndanai Girls	49,500.00
Makimeny	4,200.00	St Brigid Girls	10,000.00
Marinyin	17,500.00	Chemelet Primary	350.00
Matobo	35,000.00	Chemelet Secondary	2,000.00
Mogogosiek	10,200.00	Kabiangek Secondary	4,700.00
Mugango	-	Olbutyo Girls High	45,600.00
Mombwo	5,000.00	St Monica High School, Chebangang	30,666.00
Ndanai	17,700.00	Sacred Heart, Kimatisio	13,000.00
Ndaraweta	10,000.00	Yaganeek	1,333.00
Nyagacho	21,000.00	Kapchepkoro High	1,733.00
Roret	47,350.00	Kapcholyo High	667.00
Sacred Heart Cathedral	243,000.00	Kamirai Primary	733.00
Segemik	20,040.00	Kapkisiara Girls	2,500.00
Segutiet	10,000.00	Tumbelion Primary	847.00
Sigor	18,000.00	Koiwa Boys	970.00
Siongiroi		Chebilat Boys	1,300.00
Sironet	20,000.00	Sacred Heart, Roret	17,600.00
Sotik	39,000.00	Sugumerga Secondary	1,650.00
Siongiroi		Chepkosiom High	1,140.00
Tegat	2,100.00	Chepkosiom Primary	1,153.00
Telanet	40,000.00	GRAND TOTAL	1,550,670.00
St Mary's Girls Primary Boarding	30,000.00	TO KCCB-CJPD	602,325.00

DIOCESE OF KITALE

PARISH			
Christ The King	126,000.00	Kibomet	59,500.00
Kiminini	102,900.00	Kachibora	51,000.00
Kaplamai	61,470.00	Kapenguria	51,000.00
Immaculate Parish	61,000.00	St Joseph's	50,000.00

Kwanza	46,450.00	Amakuriat	10,000.00
Kolongolo	41,315.00	Russ Brine	10,000.00
Chepchoina	40,820.00	Kabichbich	9,860.00
Sirende	40,000.00	Kaptabuk	9,000.00
Suwerwa	33,250.00	P'sigor	8,000.00
Makutano	30,378.00	Lomut	7,000.00
Kipsaina	30,200.00	Chepnyal	6,300.00
St Kizito Matisi	28,320.00	Sina	6,120.00
Kapkoi	27,100.00	Kacheliba	6,000.00
Babaton	26,990.00	SUB-TOTAL	1,167,498.00
Benon	25,000.00	Institutions	
Saboti	25,000.00	Kiminini Cottage	11,000.00
Endebess	23,000.00	Mary Immaculate Pry.	7,800.00
Andersens High School	20,800.00	St Peters Musharage	3,755.00
Bwayi	20,200.00	Sikhendu Primary	3,555.00
Kapsara	20,000.00	Njoro Secondary	780.00
Ortum	18,150.00	SUB-TOTAL	26,890.00
Chepareria	15,000.00	GRAND TOTAL	1,194,388.00
Tartar	10,325.00	TO KCCB-CJPD	360,000.00
Mbara	10,050.00		

DIOCESE OF KITUI

PARISH			
Migwani	33,625.00	Mutomo	-
Kabati	76,000.00	Mwingi	26,530.00
Kavisuni	18,770.00	Kimangao	9,750.00
Kyuso	8,625.00	Muthale	29,647.00
Ikanga	55,000.00	Mulutu	30,180.00
Mutune	41,823.00	Boma	94,725.00
Kamuwongo	-	Mbitini	11,500.00
Nuu	5,000.00	Ikutha	18,696.00
Kiio	10,000.00	Nguni	6,600.00
Nguutani	100,000.00	Miambani	40,000.00

Zombe	56,790.00	St Michael Kavumbu Secondary	2,233.00
Mutito	8,700.00	Stthomas Katheka Boys	205,920.00
Museve	20,500.00	St Joseph's Seminary	11,333.00
Endau	5,700.00	St Mary's Mutito Girls	23,333.00
Mbondoni	4,500.00	St Monicah Mulutu Girls	12,567.00
Kanyangi	22,304.00	St Johns Kwa Mulungu	75,133.00
Katutu	10,000.00	St Angelas Girls	78,400.00
Kasyala	20,330.00	St Mathias Matinyani Boys	36,870.00
Kwa - Vonza	21,750.00	Christ The King Kawongo Secondary	11,560.00
Voo	-	St Antony Katyethoka Secondary	334.00
Kwa Kilui	29,750.00	St Augustine Mwingi Boys	17,867.00
Mathuki	5,400.00	St Francis Kamuwongo Primary	20,000.00
SUB-TOTAL	822,195.00	St Michael Boarding Primary	76,580.00
INSTITUTIONS		St Joseph's Seminary	16,667.00
St Gabriel Boarding Primary	50,000.00	SUB-TOTAL	689,942.00
St Augustine Secretariat	46,975.00	GRAND TOTAL	1,512,137.00
Muthale Satellite Hospital	4,170.00	TO KCCB-CJPD	504,046.00

DIOCESE OF LODWAR

PARISH			
St Augustine Cathedral	100,000.00	Good Shepherd, Kakuma	35,170.00
Holy Family, Kanamkemer	20,000.00	Holy-Cross Kakuma Camp	32,000.00
Risen Christ, Nakwamekwi	36,000.00	St Mark, Lokitaung	4,000.00
St Dominic, Kerio	4,050.00	St Joseph, Lowarengak	10,700.00
St Gabriel, Kangatosa	2,000.00	St Titus & Timothy, Kaeris	8,000.00
St Kizito, Turkwel	6,550.00	St James, Kaikor	-
St Peter, Lorugum	5,000.00	St Dennis, Kataboi	7,000.00
All Saints, Kainuk	3,000.00	Mary Mother of God, Kalokol	16,000.00
Immaculate Conception, Katilu	5,200.00	St Stephen, Losajait	7,850.00
St Daniel Comboni, Lokori	18,000.00	Christ the King, Lokichar	19,500.00
St Lawrence, Nakwamoru	14,000.00	Our Lady Queen of Peace, Todonyang	15,055.00
St John, Lokichogio	9,900.00	Nariokotomoe Mission	5,000.00
St Benedict, Kalobeyei	-	St Michael, Napetet	15,000.00

Our Lady of Sorrows, Oropoi	1,200.00	Radio Akicha	1,000.00
St Joachim & Anne, Kibish	10,000.00	St Marys Kapelbok	845.00
Holy Spirit, Nawoitorong	23,480.00	St Benedict Lowarengak Boys	3,000.00
Holy Family, Kaleng	7,900.00	St Scolasticah Lowarengak Girls	1,700.00
St Paul, Namoruputh	1,000.00	Queen of Peace Girls Primary	35,000.00
SUB-TOTAL	442,555.00	SUB-TOTAL	44,545.00
INSTITUTIONS		GRAND TOTAL	487,100.00
St Patrick Nakwamoru Primary	3,000.00	TO KCCB-CJPD	180,000.00

DIOCESE OF MACHAKOS

PARISH			
St. Jude Catholic Parish, Athi River	905,396.00	St' Lucia Catholic Parish, Joska	120,000.00
St. Veronica Catholic Church, Syokimau	739,000.00	Catholic Missin Nguluni	114,650.00
St. Joseph Catholic Parish MSFS, Mlolongo	447,515.00	Catholic Mission Kanzalu	110,000.00
Tala Catholic Parish Project	350,728.00	CDM Mary Mount Chaplaincy	105,200.00
Catholic Mission Machakos Cathedral	322,700.00	Catholicmission Kiongwani	102,152.00
Masii Catholic Mission	300,700.00	Catholic Mission Makindu	101,781.00
Catholic Mission Matuu	250,000.00	St. John The Apostle, Emali	101,655.00
Catholic Mission Kyale	229,825.00	Catholic Mission Kitise	90,000.00
St. Mary's Catholic Parish, Tala	202,642.00	Kabaa Catholic Mission	90,000.00
Tawa Catholic Mission	201,110.00	Kibwezi Catholic Mission	90,000.00
Catholic Mission Matiliku	200,215.00	Catholic Mission Mwala	85,750.00
Catholic Mission Sabaki	195,000.00	Kalawa Catholic Church	83,300.00
Catholic Church Katangi	181,500.00	Catholic Mission Mangelete	82,275.00
Catholic Mission Mbiuni	171,345.00	St. Charles Lwanga, Kinyui	81,315.00
Kathonzweni Parish	153,825.00	Catholic Mission Mbitini	81,150.00
Catholic Church Makueni	150,000.00	Catholic Mission Makutano	78,000.00
St. Christopher Catholic Mission, Kyumbi	147,200.00	Catholic Mission Kaumoni	75,000.00
Masinga Catholic Mission Project	141,629.00	Catholic Mission Kithangaini	74,165.00
Catholic Mission Mutituni	134,435.00	Mtito Andei Catholic Mission	70,500.00
St. Mary's Kaewa Catholic Mission	131,310.00	St. Mary's Catholc Mission, Miseleni	70,360.00
Catholic Mission Donyo Sabuk	124,000.00	Catholic Mission Nguluni	69,000.00
Catholic Mission Ngunga	121,065.00	Ikalaasa Catholic Mission	64,000.00
		Holy Spirit Catholic Parish, Kithimani	63,000.00

Catholic Mission Mbumbuni	62,100.00	Catholic Mission Kaunguni	33,520.00
Catholic Mission Mananja Project	60,000.00	St. Martin Catholic Parish Matuu, Wendano	33,000.00
Musaalani Catholic Mission	60,000.00	Catholic Church Nzaikoni	31,495.00
Ndithini Catholic Parish	58,200.00	Catholic Mission Mbuani Project	31,000.00
Catholic Mission Mbuvo	57,140.00	Catholic Mission Utangwa	31,000.00
Catholic Mission Itithini	55,980.00	Catholic Church Kangundo	30,000.00
Kitwii Catholic Mission	55,095.00	Mukuyuni Catholic Mission	28,140.00
Catholic Mission Mavindini	51,050.00	Catholic Mission Ikalakala	25,940.00
Catholic Mission Kola	51,000.00	Senda Parish	25,000.00
Catholic Mission Yathui	50,500.00	Kathyaka Parish	21,010.00
Catholic Diocese of Mks Development	50,000.00	Catholic Mission Katoloni	20,500.00
Catholic Mission Kilungu	47,500.00	Catholic Mission Sultan - Hamud	20,100.00
Catholic Hospital Chaplaincy	47,200.00	St. Boniface Wautu Parish	19,345.00
Catholic Mission Kaewethei	47,000.00	St. Jude Catholic Mission Kivaa	17,360.00
Catholic Mission Mitaboni	46,130.00	St. Joseph's Prison Chaplaincy	3,000.00
Catholic Mission Tulimani	45,000.00	Catholic Mission Mbooni	-
Catholic Mission Ikombe	44,405.00	Mavoloni Catholic Mission	-
Catholic Mission Kambu	43,400.00	SUB-TOTAL	9,506,033.00
St. Anne Kavatini Catholic Mission	42,150.00	INSTITUTIONS	
Catholic Mission Thatha	42,055.00	St Bhakita Girls, Mbuvo	15,500.00
Catholic Diocese Mks Makaveti	42,000.00	St. Augustine Chaplaincy (Machakos University)	12,819.00
Catholic Mission Kasikeu	40,825.00	MterDei Mua Hills Girls	10,000.00
Catholic Mission Kithyoko	40,790.00	Uganda Martyrs School	5,410.00
Catholic Mission Komarock	40,510.00	Machakos T.T.C	2,300.00
Kikumini Catholic Mission	40,200.00	SUB-TOTAL	46,029.00
Katheka Catholic Mission	40,000.00	GRAND TOTAL	9,552,062.00
Catholic Mission Kwa Kathule	37,000.00	TO KCCB-CJPD	3,184,021.00
Catholic Mission Muthetheni	34,000.00		

DIOCESE OF MALINDI

PARISH			
St. Mary Help of Christians, Langobaya	12,000.00	St. Charles Lwanga, Muyeye	105,780.00
St. Francis Xavier, Kisumu Ndogo	60,000.00	Blessed Joseph Alamano, Adu	15,000.00
Our Lady Queen of the Ocean, Kipini Sub Parish	16,500.00	St. Joseph the Worker, Wema	21,000.00
		St. Michael Mission, Mida	13,896.00

St. Mary's Assumption, Hongwe	72,180.00	St. Paul, Gongoni	26,550.00
St. Anthony of Padua, Cathedral	115,374.00	St. Mary's, Msabaha	34,800.00
Mere Mission, Mere	20,880.00	St. Andrew's, Shakadulo	4,200.00
Mary Mother of Jesus, Lamu	57,000.00	St. John the Baptist, Watamu	105,000.00
St. Joseph Freinademetz, Witu	74,640.00	Queen of the Holy Rosary, Chakama	21,780.00
St. Jude Thaddeus, Muhamarani	17,250.00	St. Francis of Assisi, Baharini	11,250.00
Christ the Good Sower, Mpeketoni	95,841.00	St. Catherine, Tarasaa	15,750.00
St. John, Hindi	60,000.00	Bishop Francis Baldacchino School	21,490.00
Sacred Heart of Jesus, Garsen	36,000.00	GRAND TOTAL	1,047,661.00
St. Joseph the Worker, Marafa	13,500.00	TO KCCB-CJPD	363,547.00
Sacred Hert of Jesus, Magarini	-		

DIOCESE OF MARALAL

PARISH			
Baragoi	119,005.00	Sererit	31,000.00
Porro	35,000.00	Good Shepherd Seminary	27,850.00
South Horr	30,000.00	Irene Girls	21,665.00
Morijo	30,000.00	Wamba	37,850.00
Milimani	28,720.00	Sereolipi	35,640.00
Cathedral	149,960.00	Barsaloi	14,500.00
Tuum	18,625.00	Lodungokwe	31,000.00
Archers Post	41,670.00	Diocese Secretariat staff	6,500.00
Suguta	57,660.00	GRAND TOTAL	766,795.00
Lodokejek	50,150.00	TO KCCB-CJPD	250,000.00

DIOCESE OF MARSABIT

PARISH			
Dirib Gombo	11,500.00	Loiyangallani	25,290.00
Illeret	34,770.00	Maikona	28,000.00
Karare	21,222.00	Marsabit Cathedral	81,600.00
Kargi	15,000.00	Moyale	51,600.00
Korr	35,350.00	North Horr	22,400.00
Laisamis	19,915.00	Sololo	20,000.00

Dukana	11,400.00	Evangelizing Sisters	3,500.00
Kalacha	34,000.00	Illeret High	1,800.00
Loglogo	51,000.00	Moi Girls, Marsabit	3,700.00
Hurri Hills	7,500.00	Nazareth Sisters Of The Annunciation	5,000.00
Turbi	5,375.00	Caritas	36,000.00
Nirmalla Sisters	5,000.00	GRAND TOTAL	532,922.00
Dimesse Sisters	2,000.00	TO KCCB-CJPD	527,922.00

DIOCESE OF MERU

PARISH			
Cathedral Parish	583,340.00	Buuri Parish	119,850.00
Kionyo Parish	378,000.00	Limbine Parish	118,380.00
Nkubu Parish	345,250.00	Magundu Parish	117,915.00
Chuka Parish	312,120.00	Mpukoni Parish	115,000.00
Mikinduri Parish	264,235.00	Amung'enti Parish	114,070.00
Kariene Parish	231,215.00	Tigania Parish	112,300.00
Igoji Parish	230,000.00	Ndagani Parish	111,800.00
Rijji Parish	200,390.00	Kaguru Parish	105,000.00
Laare Parish	181,200.00	Mutuati Parish	102,730.00
Maua Parish	180,000.00	Mukothima Parish	102,690.00
Kinoro Parish	178,050.00	Nkabune Parish	100,700.00
Runogone Parish	165,000.00	Chaarua Parish	100,350.00
St. Massimo Parish	164,000.00	Gatimbi Parish	100,000.00
Irinda Parish	147,200.00	Iruma Parish	96,200.00
Timau Parish	143,565.00	Muthambi Parish	87,740.00
Kibirichia Parish	140,000.00	Marimanti Parish	85,000.00
Miruriiri Parish	134,400.00	Nthare Parish	81,000.00
Kirogine Pro Parish	133,585.00	Kianjai Parish	80,260.00
Kanyakine Parish	123,740.00	Nkondi Parish	80,000.00
Kangeta Parish	123,000.00	Magumoni Parish	76,560.00
Nchaure Parish	120,180.00	Mbaranga Parish	75,500.00
Gatunga Parish	120,000.00	Mujwa Parish	75,500.00

Kathwana Parish	75,200.00	Antubetwe Parish	29,750.00
Kiirua Parish	72,550.00	Nciru Parish	28,150.00
Munithu Parish	71,500.00	Ndunguri Parish	20,400.00
Matiri Parish	71,000.00	Mukululu Parish	18,000.00
Kamunjine Parish	70,000.00	Thanantu Parish	16,000.00
Ruguta Parish	69,550.00	Kanyaki Parish	8,630.00
Kajuki Parish	66,880.00	Kithima Parish	6,200.00
Mitunguu Parish	64,080.00	SUB-TOTAL	8,597,573.00
Chera Parish	62,455.00	INSTITUTIONS	
Kaongo Parish	60,800.00	Christ the Savior, Meru Prison Chapel	168,485.00
Charanga Parish	60,000.00	St. Theresa's Mission Hospital, Kiirua	134,280.00
Giaki Parish	60,000.00	Consolata Hospital Chaplaincy, Nkubu	58,370.00
Athiru Parish	58,000.00	St. Orsola Hospital Staff	25,300.00
Katheri Parish	57,000.00	Our Lady of Grace Marimba Chapel	15,000.00
Igandene Parish	56,100.00	Don Orione Srs, Laare	3,000.00
Mumbuni St. Michael Parish	55,050.00	Franciscan Clarist Srs, Nchiru	2,000.00
Athi Parish	53,925.00	St. Jude Thaddeus Chapel, Kangeta Prison	4,450.00
Ruiru Parish	51,350.00	Meru National Polytechnic	10,230.00
Mikumbune Parish	51,150.00	St. Theresa of Avilla MUST	10,600.00
Chogoria Parish	50,250.00	Chuka Boys Secondary	105,780.00
Tunyai Parish	50,000.00	Mikinduri Girls Secondary	56,400.00
Tuuru Parish	50,000.00	Chuka Girls Secondary	50,000.00
Gaitu Parish	46,333.00	Materi Girls Secondary	50,000.00
Michaka Parish	45,150.00	St. Angelas Secondary	37,000.00
Munga Parish	42,165.00	Consolata Primary Gitoro	30,000.00
Kariakomo Parish	41,500.00	Magumoni Day Secondary	30,000.00
Kagaene Parish	40,000.00	Mfariji Primary	25,000.00
Nthambiro Parish	40,000.00	Muthambi Girls Secondary	20,000.00
Kiegoi Parish	31,200.00	St. Anselm Mururi Primary	15,000.00
Mbwiru Parish	30,240.00	St. Daniel's Boys Secondary	15,000.00
Kiamuri Parish	30,000.00	Ngukwine Secondary, Mutuati	14,000.00
Maraa Parish	30,000.00	Muthara Mixed Day Secondary	10,000.00

Ruri Girls Secondary	10,000.00	Divine Provident VTC, Kiamuri	2,000.00
Visitation B. Primary	10,000.00	Holy Family Primary, Kiamuri	2,000.00
St. Peter & Paul Primary, Laare	9,000.00	Kathuura Primary, Marimanti	2,000.00
Igembe Boys Secondary	8,700.00	Gaketha Primary	1,950.00
Chogoria Girls Secondary	7,500.00	St. Antony Primary, Kiagu	1,510.00
Magumoni Girls Secondary	6,800.00	Mikuu Primary	1,290.00
Muthambi Boys Secondary	5,000.00	Son Pampuri Primary	1,200.00
St. Theresa's Secondary, Riji	5,000.00	Muthambi Primary	1,030.00
Nkanda Secondary Athiru	3,465.00	Marima Primary Muthambi	1,000.00
Kariene Mixed Day Secondary	3,000.00	Kiriani Boys Secondary	990.00
Ntuti Day Secondary	2,910.00	Turima Hills Secondary, Marimanti	400.00
Ruguta Primary	2,800.00	SUB-TOTAL	984,060.00
Antubochiu Day Secondary	2,500.00	GRAND TOTAL	9,581,633.00
Kiamauri Primary	2,120.00	TO KCCB-CJPD	3,193,877.67

DIOCESE OF MURANGA

PARISH			
Kiangai	104,750.00	Kangaita	40,000.00
Tuthu	50,000.00	Gitui	15,395.00
Gatanga	261,210.00	Mukurwe	81,800.00
Mumbi	66,000.00	Gaichanjiru	81,720.00
Kimbimbi	26,740.00	Maragua	108,162.00
Kiang'ombe	21,893.00	Wang'uru	197,250.00
Gacharage	38,797.00	Kutus	172,690.00
Mugoiri	54,370.00	Baricho	70,000.00
Piai	55,000.00	Kaburugi	35,695.00
Kahatia	14,000.00	Kangari	50,000.00
Sagana	73,470.00	Karumandi	53,000.00
Kiamutugu	11,480.00	Kenol	34,333.00
Ruchu	55,305.00	Mariira	40,000.00
Cathedral	129,935.00	Mwea	119,133.00
Gaturi	14,550.00	Sabasaba	83,340.00
Ithanga	63,393.00	Kiriaini	100,000.00
Kagumo	90,000.00	Mununga	20,000.00

Mahuti	51,630.00	Kerugoya	80,000.00
Gathambi	14,000.00	Kangari	100,000.00
Kagio	228,203.00	Karaba	23,600.00
Kianyaga	48,602.00	GRAND TOTAL	2,979,446.00
		TO KCCB-CJPD	609,303.00

DIOCESE OF NAKURU

PARISH

St Francis of Assisi KITI	142,087.00	St Joseph, Larmudiac	-
Holy Cross	100,000.00	St Patricks, Ngata	76,500.00
St Monica, Section 58	94,770.00	St Augustine, Kiamunyi	150,000.00
Christ the King Cathedral	65,000.00	Holy Family, Mangu	42,170.00
St Joseph the Worker	60,219.00	Mary Mother of God, Rongai	40,000.00
Holy Trinity Mlimani	40,000.00	St Augustine, Bahati	65,000.00
St Daniel Comboni, Hekima	16,799.00	St John's Upper, Subukia	60,000.00
Prisons Chaplaicy	-	St Michael, Kiamaina	28,400.00
St John's, Muguga	69,364.00	All Saints, Kabazi	20,700.00
St Monica Catholic, Lanet	65,000.00	St Francis Lower, Subukia	20,000.00
St Peter's Parish, Lanet	20,000.00	St Veronica, Solai	18,000.00
St Paul's, Wanyororo	12,500.00	St Gerald of Aurillac, Heshima	6,500.00
St Peter & Paul, Kiptangwanyii	12,000.00	St Theresa of the Child Marigat Parish	-
St Mary's, Molo	188,250.00	Holy Cross, Mogotio	8,000.00
St Timothy, Total	15,000.00	St Patrick's Eldama Ravine Parish	-
St Peters, Elburgon	30,000.00	Mary Mother of God, Kabarnet	35,000.00
St Simon Peter, Turi	40,000.00	St Joseph's, Kituro	20,000.00
St John & Paul, Kamwaura	18,200.00	Divine Mercy, Kamgoiin	9,000.00
St Kizito, Olenguruone	10,000.00	Holy Family, Kipsaraman	6,000.00
St Veronica, Keringet	10,000.00	St Peter's, Kaptere	4,000.00
St Monica, Mwaragania	7,000.00	St Mary's, Tenges	1,221.00
St Lwanga, Njoro	70,000.00	Holy Rosary, Kerio Valley	-
St Francis Parish, Lare	32,000.00	Holy Spirit, Gilgil	95,000.00
St Augustine, Egerton University	24,330.00	St Francis Xavier, Naivasha	70,000.00
Our Lady Queen of Peace, Mau Narok	20,000.00	Our lady of Annuciation, Kayole	30,000.00

St Josephine Bakhita, Maai Mahiu	30,000.00	Church of Nativity Kositei Mission	3,500.00
St Stephen Catholic Parish, Karati	21,000.00	St Lukes Tangelbei Mission	-
St Martin of Tours, Gilgil	20,150.00	Incarnate Word Barpello	-
St Anthony DCK	15,000.00	St Josephine Bakhita Catholic Mission	-
Sisters Simon & Jude, Longonot	14,100.00	GRAND TOTAL	2,085,835.00
Our Lady of Sorrows, Kinungi	9,000.00	TO KCCB-CJPD	200,000.00
NYS Gilgil	5,075.00		

DIOCESE OF NGONG

PARISH			
Noonkopir	356,399.00	Entasekera	50,816.00
Acacia	109,800.00	Ololaimutia	10,000.00
Kajiado	58,900.00	Naroosora	5,160.00
Kisaju	20,655.00	Lemek	4,450.00
Namanga	28,473.00	Nkoroi	203,000.00
Mashuru	30,000.00	Kiserian	102,830.00
Isinya	40,000.00	Ongata Rongai	85,924.00
Kilgoris.	15,000.00	Fatima	226,000.00
Lolgorian	58,730.00	Kandisi	30,000.00
Abosi	13,000.00	St.Monica Kware	22,000.00
Loitokitok.	34,220.00	Magadi	10,200.00
Rombo	28,000.00	Olooitikosh	8,500.00
Sultan Hamud	19,120.00	Ole Kasasi	56,880.00
Kimana	90,390.00	Ngong	150,000.00
Lenkisem	30,000.00	Embulbul	71,907.00
St Peter, Narok	100,000.00	Matasia	116,895.00
St Joseph, Narok	-	St Anne Kibiko	25,704.00
N/Enkare	45,650.00	Ewuaso Kedong	11,800.00
Oloikirikirai	65,380.00	Bishop's House	15,000.00
Olokurto	15,000.00	Bridged Baraka Otoyeyi	41,210.00
Enoosupukia	4,450.00	GRAND TOTAL	2,500,556.00
Ololulunga	18,300.00	TO KCCB-CJPD	1,096,572.00
Mulot	70,000.00		

DIOCESE OF NYAHURURU

PARISH			
Cathedral	227,570.00	Oi Kalou	62,108.00
Dundori	54,000.00	Oi Moran	24,000.00
Geta	35,000.00	Pondo	31,715.00
Igwamiti	100,000.00	Rumuruti	138,700.00
Kanyagia	39,000.00	Shamanei	46,035.00
Magumu	50,000.00	Shamata	16,340.00
Maina	17,020.00	Sipili	40,500.00
Mairo Inya	83,500.00	Tumaini	28,484.00
Manunga	35,246.00	Weru	50,000.00
Marmamet	40,000.00	Kasuku	60,000.00
Mochongoi	35,000.00	Equator	85,000.00
Muhotetu	30,000.00	Rironi	50,000.00
Mukeu	52,000.00		
Murungaru	57,000.00	INSTITUTIONS	
Mutanga	94,000.00	St Anne's	-
Ndaragwa	161,000.00	Ahiti	-
Ndunyu Njeru	48,736.00	Oi Joro Orok Primary	-
Ngano	60,000.00	Rurii	-
Ngarua	262,546.00	North Kinangop Hospital	-
Ngorika	31,260.00	Mary Mother	30,000.00
Njabini	50,865.00	Laikipia Chaplaincy	-
North Kinangop	103,000.00		
Oi Joro Orok	62,440.00	GRAND TOTAL	2,392,065.00
		TO KCCB-CJPD	652,771.00

MILITARY ORDINATE

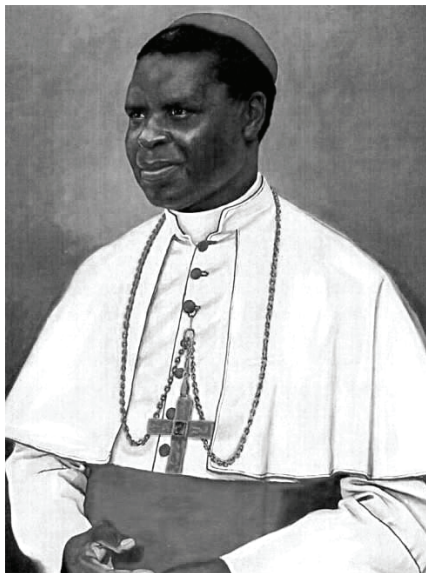
PARISH / PRAYER CENTRE			
St Peter, 4BDE	200,000.00	St Monica, Moi Barracks (RTS)	200,000.00
Our Lady Of Victory, 3 KR	250,000.00	St Mathew, 17 KR	50,000.00
St Michael, 5 KR	150,000.00	Sacred Heart Of Jesus, 77 ARTY BN	100,000.00
Our Lady Mother Of Mercy Lang'ata Garison	500,000.00	St Francis Of Assisi, 78 TK BN	100,000.00

St Joseph The Worker, Thika	200,000.00	School Of Artillery, Soa	100,000.00
St Charles Lwanga, Kahawa Garison	500,000.00	St Chalrles Lwanga, Gherille	-
Holy Rosary Embakasi Garison	400,000.00	St Ignatius Of Loyola, Bura Hache	-
St Lukes, Kenyatta Barracks	250,000.00	St Michel Doblely	200,000.00
St Paul, KMA	250,000.00	St Micheal, Kismayu	-
Ss Peter And Paul, DHQ CAU	500,000.00	St Michel, Kolbiyo	100,000.00
St Augustine JCSC, Karen	150,000.00	St Joseph, Afmadow	-
St Thomas Aquinas, 30 SF	50,000.00	St Joseph, Kuday	-
St Rathael, DFMH	150,000.00	St Beatrice, Old Air Port	-
Our Lady of Assumption, MAB	500,000.00	St Teresa, Burgavo	-
St Ignatius of Loyola, LAB	150,000.00	St Anthony, Hoosingo	-
Our Lady Star of The Sea, KN	400,000.00	St Joseph, Sarira	-
Our Lady of Mt Carmel	50,000.00	St Ignatius, Abdi Birole	-
St Pancras, Warjir Base	50,000.00	St Teresa, Sea Port	-
Our Lady Of Consolata, Soi	100,000.00	2 QRF, Congo	-
St Joseph Mukasa, 19 KR	50,000.00	St Michael, Mavivi (Congo)	-
St Cecilia, 21 KR	-	St Gabriel, Goma (Congo)	-
St Benedict, Mondika	50,000.00	GRAND TOTAL	5,800,000.00
St Don Bosco, Some	50,000.00	TO KCCB-CJPD	490,376.00

RELIGIOUS SUPERIORS' CONFERENCE OF KENYA (RSCK)

INSTITUTION			
Pallottine Fathers	5,000.00	Fransiscan Missionaries of Hope	5,000.00
Mill Hill Missionaries	10,000.00	OFM Capuchin	10,000.00
Claretian Missionaries	5,000.00	St Patrick Missionary Society	15,000.00
Missionaries of the Poor	10,000.00	Sons of the Divine Providence	10,000.00
Congregation of the Holy Cross	20,000.00	Missionaries of Charity of Brothers	3,000.00
Fraternity of the Holy Cross and all Saints	15,000.00	De La Salle Brothers	10,000.00
Consolota Missionaries	10,000.00	Quebec Foreign Mission Society	15,000.00
Benedictines	6,000.00	GRAND TOTAL	149,000.00
		TO KCCB-CJPD	60,000.00

PRAYER FOR THE CANONISATION OF CARDINAL OTUNGA



O God you granted our servant Maurice Michael Cardinal Otunga the grace to be an exemplary pastor at the Church, making him a symbol of humility and love for the poor and less fortunate in the society, while denying and detaching himself from the pleasures of the world.

Grant, we beseech thee, that we may also learn to respond faithfully to the demands of the Christian vocation, converting all moments and circumstances of our life into opportunities of loving you and our neighbours with joy and kindness, and of serving the kingdom of God with humility.

We humbly request you to grant your servant, Cardinal Otunga, a share in the glory of heaven, which is promised to those who serve you well. Through his intercession, bless the Church, our country, our families and children, and grant us the favours we humbly request... (say your intentions). Through Christ our Lord.

Amen.

PRAYER FOR THE ANTI-CORRUPTION CAMPAIGN

LET US BREAK THE CHAIN OF CORRUPTION

Father in heaven, You always provide for all your creatures, so that they may live as you have always willed. You have blessed our country, Kenya, with rich human and natural resources to be used in honour and glory and for the well being of every Kenyan.

We are deeply sorrowful for the wrong use of these your gifts and blessings through the act of corruption, as a result of which many of our people are hungry, sick, homeless and displaced, ignorant and defenceless. Father, You alone can heal us of this sickness which leads to death.

We humbly beg you, touch our lives and those of our leaders so that we may realise the evil of corruption and work hard to eliminate it. For any citizen who has acquired anything through corrupt means, Lord, give him or her, the spirit of courage to make a restitution and come back to you.

Raise up for us God-fearing citizens and leaders who care for us and who will lead us in the path of peace, justice, prosperity, progress and above all, love.

We make our prayer through Christ our Lord.

Lord graciously hear us.

**LET US BREAK
THE CHAIN OF...**



...CORRUPTION

"...CORRUPTION is a path to DEATH..."

(Pope Francis, 2015 visit to Kenya)



Email: info@kcbc.org.ke

2015

Website: www.kccb.org.ke

**Kenya Conference of Catholic Bishops-General Secretariat
CPIHD-Catholic Justice and Peace Department**

Waumini House, Westlands
P.O. Box 13475-00800, Nairobi
Tel: (+254) 20 444112/4443906 or 722 457114
Email: national@catholicchurch.or.ke
Website: www.cjpc.kccb.or.ke
www.kccb.or.ke